



THE LEBANON LANTERN

FALL/WINTER 2023

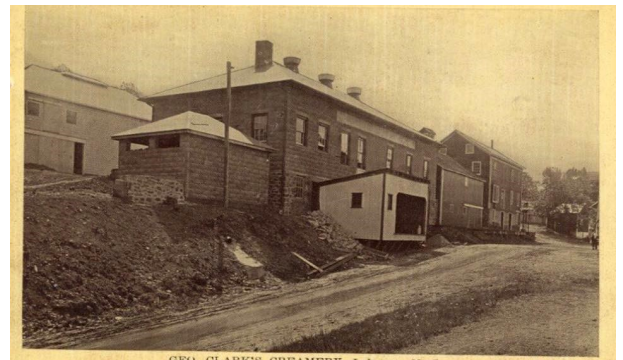
Lebanon's Hidden Gem

What's the oldest business in town? The Lebanon Cheese Factory could stake a claim. Lebanon was incorporated in 1926. Three years later, the Lotito family established the Lebanon Cheese Factory and it remains a thriving business today.

As Joe Lotito tells it, his grandfather Cristofaro's (Chris) construction business in Brooklyn was a victim of the depression but his grandmother, Grace, who came from a long line of cheese makers in Bari, Italy, convinced the family to move out to the country and open a cheese factory.

In May 1929, the family found an opportunity in Lebanon through George Clark, who owned a creamery in Lebanon. Legend has it that Clark was, at the time, Hunterdon County's largest private landowner and its first millionaire.

"The early days saw my grandmother, along with my aunts and uncles and eventually my father, working in the factory," Joe said. "Meanwhile, my grandfather crisscrossed the state to secure customers and deliver our products."



George Clark's Creamery

(Continued on page 13)

IN THIS ISSUE

Dead and Dangerous	2	Fourth of July Photo Gallery	8-9
Better Together at LBS	3	Are You Prepared for Fall/Winter?	10
Supporting Union Cemetery	4	SBES volunteer spotlight	11
Music in the Park	5	Mystery Sign	15
Community calendar	6-7	The Plants Are Invading	16
		Become Part of the Lantern	17

A title like **Dead and Dangerous** may seem contradictory but it does apply in some situations, specifically with trees.

We have all seen the damage a falling tree can cause. In fact, a dead tree limb only two inches in diameter can cause serious damage or injury if it falls 40 feet. There are many types of trees with varying characteristics as to longevity, strength, height and weight of the wood.

Unfortunately, there is a pandemic in our forests and along the streets of America. For example, the emerald ash borer has killed hundreds of millions of ash trees. Ash is a strong, heavy wood with many uses like baseball bats.

One problem is the many dead trees along every highway and many streets. Not only is ash wood heavy, it deteriorates very quickly and the limbs start breaking off almost as soon as the tree is infected.

(Continued on page 15)



A giant ash tree in Holjes-Sheppard Park that died two years ago. In the interest of safety, all the limbs have been removed.

The past year was really something special at **Lebanon Borough School**, full of awesome moments that left a lasting impact. Whenever I walked around the school and popped into classrooms, I couldn't help but feel amazed by how much effort our students and dedicated teachers put in. It's crystal clear that we're getting these students ready to be the kindness ambassadors, the creators and the deep thinkers of the future.

The education our students get here is a solid foundation for whatever they decide to do next. It's not just about learning facts, it's about getting curious minds fired up to explore, question things and come up with new ideas. Every class, every chat ... they all add up to a bunch of experiences that will help our students today and tomorrow.

Now, as our new school year is underway, I can't help but be excited about what's coming. Learning is a big adventure waiting to happen, and we get to be the guides and cheerleaders for our students on their journey. Every day brings a fresh chance to help our students pick up the skills that will help them shine. And keep in mind that as we're getting our students all set for what's next, we're also planting the seeds for some changes in the world around us. Cheers to a year of sticking with it, growing, and learning!

Better Together

Our theme this year is **Better Together**. For our school community, it is important to develop connections to foster learning and success. We connect with our classmates, our families, our teachers and our friends. Today, our world is more interconnected than ever. Through the efforts of our teachers, curriculum, and PTA, we work to develop an understanding of those connections. Our world is also connected digitally. Teaching the children to use this form of connection in a positive, productive, and safe fashion will serve them well as they move through school and move through life. While technology can sometimes be scary, it is incumbent upon us as adults to use it as a tool for learning and help students understand their world.

Our goal is to create a culture in which parents, students and teachers work seamlessly in all aspects of the school environment. I strongly believe that the responsibility for children's educational development is a collaborative enterprise. Therefore, we can't achieve this vision without you — parents, teachers and students.

School Safety Our Top Priority

Safety is a top priority at LBS. All doors are locked and all visitors must enter through the main entrance. As always, we continue to run monthly drills to ensure that all staff and students are safe. We continually work to improve our systems. This summer we installed swipe locks on several lower floor doors so that our staff have quick access to bring students into the school building in an emergency. This is just one of the many ways we work to keep our students and staff safe.

(Continued on page 14)

Lebanon's **Union Cemetery**, on Main St. next to the **Round Valley United Methodist Church**, is rich in history—and a group of volunteers has been working to honor its legacy and care for it today.

The cemetery is no longer part of the Methodist Church, and over time, former members of the cemetery association that had cared for it moved or passed away.

A recently reorganized volunteer cemetery association is working on overseeing maintenance, scheduling regular cleanup days, working to ensure veterans and emergency responders are properly recognized, and digitizing paper records.

If you have questions, would like to be part of the effort, or want to know more about plot availability, please check out their website: <https://www.unioncemeteryoflebanon.org>, or email unioncemetery100@gmail.com.





Sponsored by Lebanon
Recreation



MUSIC IN THE PARK

Where: Holjes-Sheppard Memorial Park

When: Saturday, October 7th
3:30 to 6:30 PM

Event is free, charge for food and drinks

Featuring: Sunken Silo Brewery, Metropolitan
Seafood, Lebanon Fire Dept. & Twin Goats Cafe


**PERFORMANCE
BY THE REEL
TO REAL
COUNTRY
BAND**



October 2023

Sun	Mon	Tue	Wed	Thu	Fri	Sat
1	2 Senior Bingo 1 p.m. Boro Hall	3 Senior Exercise, 1 p.m. Boro Hall	4 Senior Game Day, 1 p.m. Boro Hall	5 Enviro/Shade Tree Cmte 5 p.m.	6	7
8	9	10 Planning Board, 7 p.m.	11	12	13	14
15	16 Senior Bingo 1 p.m. Boro Hall	17 Senior Exercise, 1 p.m. Boro Hall	18 Boro Council, 7:30 p.m. Boro Hall	19 LBSA 7:30 p.m. Boro Hall	20	21
22	23	24	25 Recreation Cmte, 6 p.m.	26	27	28
29	30	31 				

November 2023

Sun	Mon	Tue	Wed	Thu	Fri	Sat
			1 Senior Game Day, 1 p.m. Boro Hall	2 Senior Game Day, 1 p.m. Boro Hall	3	4
5	6 Senior Bingo 1 p.m.	7 Senior Exercise, 1 p.m.	8	9	10	11
12	13	14 Planning Board, 7 p.m.	15 Boro Council 7:30 p.m.	16 LBSA 7:30	17	18
19	20 Senior Bingo 1 p.m./Rec Cmte	21	22		24	25
26	27	28	29	30		

December 2023

Sun	Mon	Tue	Wed	Thu	Fri	Sat
					1	2
3	4 Senior Bingo 1 p.m. Boro Hall	5 Senior Exercise, 1 p.m. Boro Hall	6 Tree Lighting	7 Enviro/Shade Tree Cmte 5 p.m.	8	9
10	11	12 Planning Board, 7 p.m.	13	14	15	16
17	18 Senior Bingo 1 p.m. Boro Hall	19 Senior Exercise, 1 p.m. Boro Hall	20 Rec Cmte, 6 p.m./Council 7:30	21 LBSA 7:30 p.m. Boro Hall	22	23
24		26	27	28	29	30
31						

FOURTH OF JULY PHOTO GALLERY



FOURTH OF JULY PHOTO GALLERY



Photos courtesy of:
George Kopp Photography
george@georgekopp.com/201.709.1355
www.georgekopp.com
instagram.com/geokopp

Fall Is Here, Winter's Around the Corner. Are You Prepared?

Now that summer is in the rearview mirror, it's time to focus on the beautiful fall season. For me, fall has the most beautiful weather of all the four seasons. That said, however cruel tropical storms and hurricanes are always a threat. So while you're enjoying the colors of the season and the wonderful sleeping weather, it's time to plan.

First in our list of fall planning is the concern for trees and wind-blown limbs that can cause power outages and/or damage structures. We recommend everyone assess the condition of trees and limbs near your home and electrical wires; by pruning or removing them, you can eliminate much heartache.

Sump Pump Check

Second should be your sump pump and cellar. Your experience during prior storms with heavy rain should help you know if your sump pump unit is too small to control water amounts. Now is a good time to consider replacing a too-small or older pump. For those homeowners at risk of severe amount of water coming into their basement, be advised that pumping out a lot of water from your basement can create a severe hydraulic pressure, which can cave in basement foundations. As a precaution, always remind those who are pumping basements of this serious possibility. Also, always remember that walking in flooded basements with electrical power on is an invitation for electrocution; this includes booted feet and legs, boots are not insulators.

Extra Piping for Drains

Third, to eliminate and/or reduce water penetrating foundations to lower levels, we suggest having extra plastic piping on hand to extend leaders away from your foundations. Gutter leaders do a good job under normal rainfall, however heavy rain can saturate soil around the foundation, creating foundation leaks. Also please remember that gutters full of leaves are big problem; clean gutters are necessary.

Eliminate Standing Water

Fourth, since we have had a wet summer, the prevalence of pesty mosquitoes can still ruin pleasant fall evenings. Remember that these pests breed in standing water. Should you have any areas where water is captured, drain these immediately and be sure to drain that old spare tire behind the garage.

Fifth, one of the greatest fire dangers is the result of charging lithium batteries within structures on your property. Charge these units outside your home or a place free from potential fire ignition sources. The heat produced due to shorted wires, and potential condition of the battery units could lead to a tragic event.

May we all enjoy the coming fall weather with our health and happiness of our neighbors.

See you around.

Lex Saharic

Meet South Branch Emergency Services Volunteer Nina Cirianni

A Meaningful Present Prepares Her for Her Future

As two South Branch Emergency Services (SBES) EMTs treated the adult with a medical emergency, 17-year-old Cadet **Nina Cirianni** focused on the patient’s two young children.

“I talked to them about what they were doing earlier that day. They had gone to the dentist. We talked about the Tooth Fairy,” Nina said. “I was able to take their mind off the situation a bit. I think they would have been more scared if they didn’t have someone to talk to.”



Nina joined SBES in June 2021 when she was 15. When squad members gave a presentation at North Hunterdon High School about the emergency medical, transport and rescue services SBES provides, the important role volunteers play, and the free training available, Nina couldn’t pass up the opportunity.

“I thought it would be a good way to expose myself to emergency medicine,” said Nina, a student in the Biomedical Sciences Academy who hopes to become an emergency room physician.

Preparing to Succeed

Her SBES tenure began with training drills and meetings, where she learned skills that helped prepare her to assist EMTs on the ambulance. Assisting, observing and asking questions of the EMTs she began riding with has helped her succeed in EMT class.

“They have so much knowledge, I’ve learned a lot from the people I ride with,” she said. At this point in her EMT education, Nina can have a more direct role in patient care, including taking vital signs. “I hope to take the EMT exam as soon as possible and continue to volunteer as an EMT,” Nina said.

When she’s not volunteering or in class, Nina plays lacrosse and soccer. A rising high school senior who lives in Whitehouse Station, she plans to study health sciences and play lacrosse at Eastern Connecticut State University.

(Continued on next page)

Keep an eye on the notice board in front of the fire station on Main St. for information about leaf pickup over the next couple of months.

(Continued from page 11)

Making an Impact

Nina's continuing experience and training as an SBES volunteer has made her feel more confident and prepared for her future, she said. She also loves making a difference in her community right now.

"Especially since I've started riding the ambulance, I've really seen how important a job it really is and how much of an impact you can make on people as the first ones to start patient care."

To learn more, volunteer, or pursue a paid EMT position with SBES, visit SBES365.org.

(Continued from page 1)

"It's a history steeped in resilience and resourcefulness, and we've been proudly operating from that same location ever since," Joe said.

Lebanon Cheese makes and sells fresh Italian cheeses, mainly ricotta and mozzarella. At its retail shop on Railroad Ave. and online, it also offers a range of imported aged cheeses, pasta products and authentic pasta sauces.

Staying in Lebanon

Businesses come and go, and, with the Lebanon Cheese Factory just six years away from its 100th anniversary, the question arises: What's kept it in Lebanon?

"Lebanon has always been more than just our business location, it's the fabric of our family history and an integral part of our identity," Joe said. "My dad, having arrived in Lebanon at just six months old, was raised in the house on our property. He later transformed the neighboring building into his residence, where he raised his eight sons, including me."

Joe's dad had several opportunities to relocate and expand the business over the years but he never did.

"For him, the notion of 'home' extended far beyond a geographical location," Joe said. "It was woven into the community and its people. To him, the potential headaches of operating on a larger scale didn't compare to the fulfillment he derived from being an integral part of this community."

H2O 2 Go

While Joe's dad didn't move out of town and expand the business, he did diversify into, of all things, pool filling. According to Joe, the story goes that back in the '50s, the property that is now the Fountain Motel on Route 22 was in a bind to get their pool filled for the summer. Joe's dad, who happened to own a 1,000-gallon dairy truck was asked if he could help. The rest, as they say, is history.

"The name Lebanon Cheese often pops up when people search for pool-filling services, leaving some folks puzzled," Joe said. "They may know us for cheese but are often surprised to learn we're in the water business as well, operating under the name H2O 2 Go."

Lebanon Cheese and H2O 2 Go have had moments of fame. LCF products were showcased in an episode of Cake Boss and the pool-filling service was featured in an episode of Tanked. And if you're a fan of Fiore's Gourmet in Hoboken, the founder was Joe's grandmother's brother, and the Cheese Factory continues to supply the shop with its products.

(Continued on next page)

(Continued from page 13)

LCF's Next Chapter

What does the next chapter hold for the Lebanon Cheese Factory?

“Our focus remains on delivering high-quality products and exceptional service while continuing our strong relationship with the Lebanon community,” Joe said. “As we look to the future, it’s clear that the business landscape is evolving, sometimes in ways that pose new challenges for long-standing local businesses. Lebanon has been our home for generations and we have every intention of ensuring that Lebanon Cheese Factory remains a vibrant part of this community for years to come.”

(For more information on the Lebanon Cheese Factory, check out their website, www.LebanonCheese.com, Facebook: www.facebook.com/lebanoncheese and Instagram: www.instagram.com/Lebanon.Cheese)

Exciting New Year at LBS

(Continued from page 3)

LBS Staff Changes

- **Mr. Gonzalez** is our new music teacher! He comes to us with over a decade of experience teaching general and instrumental music in elementary and middle school in Garwood. He has an MA in Music Education and also teaches courses at Essex County College. We look forward to his work with our students this year!
- **Mrs. Baldoni** has moved into Mrs. Lawn’s position and will be responsible for basic skills, enrichment, technology, and AT.
- **Mrs. Daniel** is our new paraprofessional who is moving into Mrs. Bower’s position.

Please take the opportunity to welcome our new staff when you have a chance. For anyone new to our district, please check out our staff and administration page on the district website at <http://www.lebanonschool.org/Administration-and-Staff>.

Before and Aftercare

Just a reminder that Lebanon Borough School offers both **before and aftercare** through the YMCA. This affordable program has been well received by those who have taken advantage of it. If you are interested in the program please contact the main office for more information or check it out on our website: [Before and Aftercare](#).

Bruce Arcurio Ed.D.
Superintendent

Dead and Dangerous

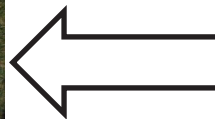
(Continued from page 2)

Once an ash borer larvae kills a tree, dead branches will begin falling in the two or three years it takes for the entire tree to die. Because there are so many dead ash trees, there is no demand for the wood as firewood and so tree trimmers must pay to get rid of the wood.

You have probably seen a few trees in Lebanon that have had all their limbs removed but the trunk is still standing.

If you have a dead or dying ash on your property, don't wait too long to address the problem. Trees along the street are the responsibility of our Shade Tree Committee but if a tree is more than 4 or 5 feet from the road, it is most likely the homeowner's responsibility.

Joe Hauck
Shade Tree Committee.



A Lebanon history mystery.

Where was the sign originally hanging?

Email your answer to lantern@lebanonboro.com

Invasive plants are becoming a bigger and bigger problem across New Jersey and in Lebanon.

Do you enjoy the smell of honeysuckle? Guess what. It's invasive. You may have noticed this year that honeysuckle was everywhere. Love how the butterfly bushes attract butterflies and hummingbirds? Invasive.

Invasive plants can spread from gardens, yards and other areas and cause serious problems for native plants and even disrupt natural ecological systems.

Why Should It Matter?

"Some people may say, 'Well, it's a survival of the fittest kind of world, so if it's green, why should it matter?'" said **Michele Bakacs**, an associate professor and agriculture and natural resources agent with Rutgers Cooperative Extension of Middlesex County, which is part of Rutgers' New Jersey Agricultural Experiment Station, in an article in *TapInto*. "It matters a lot to our local wildlife that depend on native plants for food [and] for nesting sites, and many of these invasive exotics just don't provide the same kind of resources and habitat that the native plants do."

Deer and an every-changing habitat only contribute to the problem, according to the article.

"All the deer that we have don't eat invasive exotic plants," Bakacs said. "With that added browse pressure, the native plants don't stand a chance."

Learn About Your Plants

She recommends residents first learn what kinds of plants they have to find out if they have any of the "problem plants," according to the article. She said the **New Jersey Invasive Species Strike Team** has a [Do Not Plant List](#) that anyone can download and use to assess their yard and also when shopping for plants to avoid purchasing invasive plants.

In addition, she pointed to a [Rutgers fact sheet](#) that has information on native plants and how to incorporate them into residential landscapes, the article said.

Great Resources Available

"There's lots of really great resources for people to start being better stewards of their home landscapes and thinking about how they can make their yards into better habitats," Bakacs said, according to *TapInto*. "It would be great if people thought about, 'Well, instead of just getting what my neighbor has, I can choose plants in my landscape that are going to benefit birds and butterflies and provide important resources for wildlife.'"

(To read the TapInto article this story was based on, click [here](#).)

The Lebanon Lantern is one of the main ways to keep informed about what's happening in the borough and how our community works together to keep safe. It's also a great way to learn about the special people who live here and the important businesses that rely on our support for their success. And so it is *your* newsletter.

If you are interested in contributing, email us at lantern@lebanonboro.com.

Alternatively, you can email a story or article to us.
Here are the deadlines for 2024:

Spring 2024:	Feb. 23
Summer 2024:	May 24
Fall 2024:	Aug. 23
Winter 2024	Nov. 22



Our spring issue covers March, April and May. Summer covers June, July and August. Fall covers September, October and November. And Winter covers December, January and February.

RECYCLE THIS, NOT THAT!

In Lebanon, we follow what's called **single-stream recycling**. That means that both the collection and processing systems can handle a mixture of recyclables mixed together.

Please place all your recyclables in one container.

But we cannot recycle everything. Please take a look at the list below, maybe print it out and put it somewhere you can find it easily to refer back to.

Please remember: We cannot recycle containers, bottles, boxes, bags or anything that has food on or in it. A good rinse should do the trick! **That means pizza boxes are out!**

- Plastics (#1, 2, 3, 4, 5 or 7, no #6)
- Aluminum cans
- Aluminum trays and foil (cleaned)
- Aerosol cans
- Steel and tin cans
- Glass jars and bottles
- Lids to bottles, jugs, jars, etc.
- Newspapers and inserts (no plastic sleeves)
- Magazines, catalogs, phone books
- Office and school paper
- Cardboard
- Boxboard (cereal boxes, etc.)
- Brown paper bags
- Paperback books
- Paper-only junk mail



Lebanon Borough Municipal Building

Attn: Communications Committee
6 High Street
Lebanon, New Jersey 08833

PRSR STD
ECRWSS
US POSTAGE
PAID
EDDM RETAIL

LEBANON BOROUGH
BUSINESS AND RESIDENT

DON'T FORGET TO VOTE ON NOV. 7

Important Phone Numbers

Emergency - 911
State Police - 908-730-6100

Lebanon Borough Volunteer Fire Dept - 908-236-2792
Lebanon Borough Municipal Building - 908-236-2425

Lebanon Borough Governing Body

Mayor Jim Pittinger
mayor@lebanonboro.com

Council President
Richard Burton
rburton@lebanonboro.com

Council Members
Sam Berger
sberger@lebanonboro.com

Mary Logan
mlogan@lebanonboro.com

Jim Lance
jlance@lebanonboro.com

Greg Crawford
gcrawford@lebanonboro.com

Robert Kirchofer
rkirchofer@lebanonboro.com

Municipal Contacts

Karen Romano
Borough Administrator/Clerk
clerk@lebanonboro.com
908-236-2425

Lisa Saharic
Deputy Clerk
deputy@lebanonboro.com
908-236-2425

Danene Gooding
Tax Collector
tax@lebanonboro.com
908-236-0620

Jeffrey Burd
Tax Assessor
assessor@lebanonboro.com
609-638-3151

Anita Weingart
LBSA Secretary
LBSA@lebanonboro.com
908-236-2704

Joe Hauck
Zoning Officer
catskilljoe@yahoo.com
908-236-2425

Get Lebanon Alerts

Sign up for alerts and updates on our website www.lebanonboro.com.

Want to get the Lantern via email?
Got something to say?

Drop us a line at lantern@lebanonboro.com
The deadline for the next Lantern is Friday, Feb.
23, 2024.