



The Lebanon Lantern

Autumn 2016

6 High Street Lebanon, NJ 08833
(908) 236-2425 Fax (908) 236-2939

www.lebanonboro.com



Mayor Mike Reino christened the Lebanon Borough Volunteer Fire Company's new engine with Chief Kevin Saharic. Engine 18 replaces two trucks - the tender (tanker) and the old engine.



*Lebanon Reformed Church
Lebanon, New Jersey*

Lebanon Reformed Church

Reverend Thomas E. Jones

100 Brunswick Ave, Lebanon, NJ 08833

www.lebanonreformedchurch.org (908) 236-6167 lebanonrefchurch@aol.com

Hello Friends in Lebanon Borough,

I am excited to let you fine folks in the Borough know of my recent Ordination and Installation as the called Pastor of the Lebanon Reformed Church. I share this news with you because the Holy Spirit could have lead me to any of the churches that I've developed relationships with in my ten plus years of ministry.

I can only speculate as to why God chose to point me towards Lebanon; yes, the congregation was in need of a Pastor, and yes, the church has two centuries of history within the community, among other reasons. But, the central reason becomes clear when I walk the streets of the Borough and have conversations with the warm and friendly residents.

That's when it becomes apparent that the love I share with the residents of Lebanon is matched with the love I receive in return. Lebanon is indeed a caring community.

The Reformed Church here in Lebanon is a place where your faith is nurtured. The transforming love of God is shared with everyone regardless of who they are.

It is by God's loving grace working through the congregation and the Borough residents that I am here in Lebanon.

Grace and Peace to You.

Pastor Tom Jones

All SENIOR CITIZENS are invited to complementary dinner and entertainment featuring "DeJesus Inspires". The event is in the church fellowship hall on Saturday November 12. The hall is wheelchair accessible. Call (908) 963-8899 for show time and make your reservation as seating is limited.



CLASSIC CAR owners were invited to show their cars at this year's annual ICE CREAM SOCIAL held on August 11. A summer rain shower passed by that evening and afterward a wondrous double rainbow to enjoy.

Updates on Bible study meetings, Christmas caroling and Christmas Eve candlelight service will be on the website www.lebanonreformedchurch.org.

Environmental Commission

County Hazardous Waste Day

First we want to thank everyone for their recycling efforts. A quick drive around the Borough on a Tuesday morning will provide proof that many residents take recycling seriously. There are, however, more than a few things that cannot be disposed of in the normal trash stream. One is electronic waste. This was recently done with a special collection of items at Borough Hall. The second category is hazardous waste. Just what is hazardous waste? The list is long and includes paints, varnishes, pesticides, mercury thermometers, fluorescent tubes and bulbs, pool chemicals, paint thinner, gasoline, waste oil, asbestos and more. The date is November 12, 2016, time 8AM to 4:30PM and the location is the County Rt12 complex. Please look at the website for more information. <http://www.co.hunterdon.nj.us/recycling/cleanup.html>

The Lebanon Borough Shade Tree Committee

Pruning workshop - Do you know the answers to any of the following questions?

Why do you prune a tree? What time of the year do you prune a tree? Where is the best place to cut the branch? These are all good questions, but more importantly, the answers can help you get young trees off to a good start and avoid big problems years later. The Shade Tree Committee will hold two Saturday workshops in November in the Holjes-Sheppard Park. This will be a fun event, where we will examine park trees and discuss what needs to be done and why, and then we will do it right then and there. The dates will be two different Saturdays in November when the leaves are down and most branches can be viewed. Look for the dates on the Borough sign on Main St.

Historical Committee

Lebanon 90th Anniversary

This year marks the 90th anniversary of the formation of Lebanon Borough as a separate municipality. While Lebanon and the surrounding area had that name as far back as the Revolution, the area was part of a larger municipality until 1926. Located in the middle of what was originally Lebanon Township, the confusion began in 1841 when the southern half of Lebanon Township became a separate township and chose the name Clinton Township. This left the Lebanon village, and the Post office of the same name, in the middle of Clinton Township with Lebanon Township several miles north. The resulting confusion exists to this day.

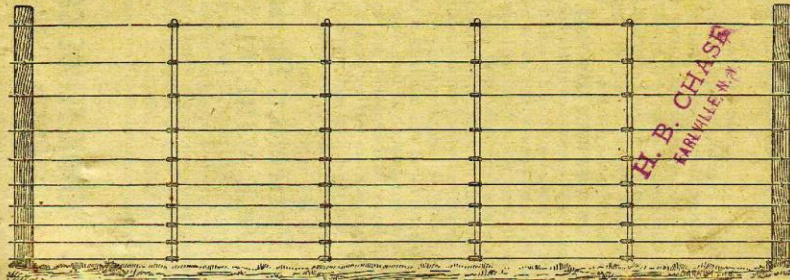
In 1910 or so, Clinton Township built a new grade school in Lebanon between High and Maple streets. Today it is our Borough Hall. Around 1925, serious discussion centered on the need for another school to accommodate additional children. There were many residents of what is now the Borough who did not believe we should spend the money to build another school. In January of 1926, a meeting was held by local businessmen at Boudreau's Hotel (now known as the Fox and Hound) to set off the Lebanon fire and light district from Clinton Township. A special election was held in April at the Odd Fellows Hall across the street from Boudreau's. The measure passed 221 votes were cast, 178 yes and 43 no. Clinton Township did build another school in Annandale very similar to the Lebanon school. It does show that school funding is not a new issue. A letter from

the first mayor, Andrew Rittenhouse, shows the new officials on the letterhead. The letter was sent to a close friend and former sales agent for the Knox Fence Company, which Rittenhouse was the president. The Rittenhouse home still stands on Cherry St. and the Knox fence is along the side as well as around the cemetery on Brunswick Ave.



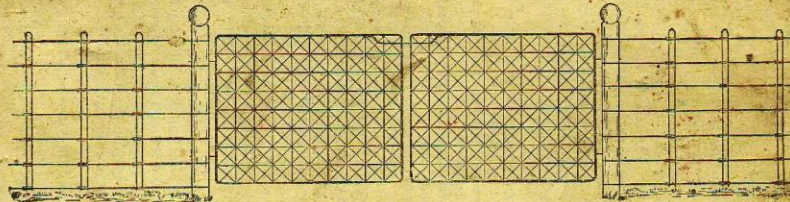
RESIDENCE OF A. B. RITTENHOUSE, LEBANON, N. J.

Perfection Spring Lock Wire Fence.



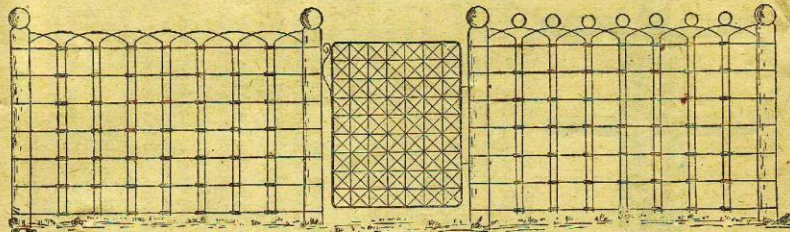
MANUFACTURED BY **KNOX FENCE CO.** LEBANON, N. J.

CUT SHOWING DOUBLE GATE.
No. 1.

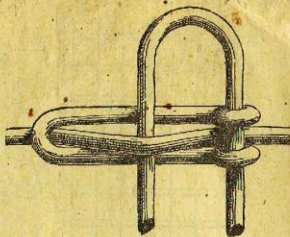


This shows our Plain Lawn Fence with double gates. This fence is built just like the Farm Fence, only the stays are shorter and put closer together; but is cheap and neat. Our gates are made with heavy gas pipe frames, with heavy wires running cross-wise, then woven diagonally with small wires, thus making them strong and handsome, and as they are made from galvanized iron there will be nothing to rust.

No. 2. CUT SHOWING SINGLE GATE. No. 3.



This shows two styles of Lawn Fences. These are made something like the farm fences, only you will notice that each stay is fastened together by the spring lock, and as the material is all heavy it can not help but be strong and durable, and can be built cheap.



(ACTUAL SIZE LOCK.)

Before advancing further we wish to impress one thing upon your mind namely: *The importance of putting in the proper amount of heft, and putting it in the proper shape and place.*

Experience and observation have taught us that to have a fence stand firm and stand in proper position it must have the perpendicular support. This is obtained by using a heavy cross stay; if this is not made of wire it is substituted by a wooden picket, and as the slat and wire fence will soon be something of the past, we would say that this same support can be obtained by using our double stay, which will give the fence the proper amount of perpendicular support, and hold the fence in proper shape.

When comparing our fence with other fences, be sure and consider the heft, for there is where you get the strength.

Always remember we combine heft, strength and durability. It will ever be our aim to keep the Perfection Spring Lock Wire Fence the best on the market.

We will try and give you something of an idea how this fence is made.

We first stretch the wire on the posts, each one separately, until we have the desired number, then the stays and spring locks are put on by a small tool made especially for this business. This work is quickly and easily done, and by doing this way you can always get the line wires all the same tension, and can go over uneven ground just as successfully as level surfaces. If the fence is woven in the factory this would be hard and entirely impossible to do as either the top or the bottom will be loose. There are some essential things in a wire fence. Let us consider a few of them.

1. Use good heavy galvanized wire.
2. Use a good heavy cross stay.
3. There must be a sufficient amount of spring to regulate it.
4. A lock that will securely fasten the stay to the line wire.

If you look into the Construction of the PERFECTION FENCE you will see we have all of the following.

1. We use the best No. 9 galvanized wire that the market affords, putting in as many as the purchaser desires, so you see we get the desired strength in that direction.
2. We use a No. 7 double wire for a cross-stay, running from the top to the bottom, thus making it impossible for hogs to raise the bottom wire without raising the whole fence, neither can large stock bend it down reaching over it.
3. Our combination Spring Lock securely fastens the cross stay to the line wire making it impossible for stock to slip them, and at the same time provides for expansion and contraction by heat and cold.
4. This fence can be built just as the purchaser desires, using as many wires and spacing them according to stock

coming in the contact with it.

5. It is conspicuous and perfectly harmless.

OUR FENCE

Is fast growing in reputation all over the country, and is appreciated by all who use it. It is with boldness that we confirm the statement of some of the best farmers of the country, that the Perfection Spring Lock Wire Fence is the strongest and best fence on the market.

JUST A FEW WORDS ABOUT POSTS.

Some fence companies started out to see how few posts they could use, and now we see the same fence with pickets nailed on to hold them up. Nothing looks worse than a wire fence with rails and pickets used instead of posts. Why not put in the proper amount when you are setting them and not try to hang the fence on the atmosphere, for it will not hold it. Our fence will stand up on as few posts as any other fence on the market, but we do not recommend them further than 25 feet apart. Use good long end posts, well set and braced, then put line posts in from 16 to 25 feet apart. Put

Perfection Spring LOCK WIRE FENCE

on them and you will have something that you will feel proud of and will be an ornament to your place. One thing sure, when a man puts a dollar in this fence he gets a dollar in return.

For further particulars call on or address

KNOX FENCE CO.
LEBANON, N. J.

Single Stream Recycling

In single stream, both the collection and processing systems are designed to handle a fully commingled mixture of recyclables. Please place all recyclables (see list below) in one container.

The following material can be recycled ONLY if they are clean (free of food waste). A good rinse should be sufficient for most items.

Single Stream Recycling

- Plastics marked with numbers 1, 2, 3, 4, 5 or 7 (no #6)
- Aluminum cans
- Aluminum trays and foil (cleaned)
- Aerosol cans
- Steel and tin cans
- Glass jars and bottles
- Lids to bottles, jugs, jars and other containers
- Newspapers and inserts (remove plastic sleeves)
- Magazines, catalogs, phone books
- Office and school paper
- Cardboard
- Boxboard (cereal boxes, etc.)
- Brown paper bags
- Paperback books
- Paper-only junk mail

Please note:

- The Recycling Trucks appear identical to the Garbage Trucks. It is the responsibility of Premier Disposal to place the recycling in the correct truck. All Recycling must be in open containers or clear plastic bags.
- All Bulk pick up must be called in to Premier Disposal at (908)638-0005 prior to placing curbside.
- Premier Disposal by NJ State Law will not pick up electronics. Lebanon Borough conducts an electronic drop off, Clothing drop off and Shredding Day at Borough Hall once a year. The dates for drop off for each event will be advertised on the marquee and in the Lantern prior to the event.
- Grass Clipping and Yard Waste are picked up with curbside service every Tuesday. Branches and grass clippings must be bundled and tied or in an open container.
- All Recycling and Garbage must be placed curbside before 6 am every Tuesday or Monday night but **NOT before**.

PLEASE DO NOT THROW LIQUIDS IN THE RECYCLING OR TRASH! IT CAUSES THE SMELL AND STAINS ON THE ROADWAYS!!!

Let's Celebrate Our Small School

Dr. Charles Maranzano, CSA

It is clearly articulated in educational research that small schools have many advantages over their larger counterparts. In the past century, American public education was dominated by small schools. Well before the internet, streaming video, social media, cell phones, television and even mass transit, America's children learned their reading, writing, civics, and arithmetic in small, often one-room, schools of the past. Typically, in these settings older children helped the younger ones learn, students progressed at their own pace, teachers would individualize lessons and provide personal contact with each student on a daily basis.

What about the small schools of the 21st century? The educational literature defines small schools as facilities that contain generally less than 300 students. In Lebanon Borough, our uniquely small school contains just 100 children in pre-K through grade 6. There is just one grade per class level and class sizes average out to be about 12 to 13 students. This in my opinion is a huge advantage for our tiny school!

What attributes exist in our small school? There is a sense of pride at all grade levels, an attitude and sense of personal possession. The students are engaged and parents are involved in the learning process. The interaction among children, parents, teachers, staff, administrators, and community residents is genuine. The size of our school encourages personal interaction and working relationships between all members of our educational team. This leads to easy acceptance of new ideas and a strong sense of identification and belonging.

Our teachers are more apt to truly know their students as opposed to teachers in large schools. They are familiar with the family backgrounds of the children they serve. This enables teachers to more knowledgeably make special provisions for individual needs and talents, and to receive better cooperation from parents in resolving problems that may arise. Students are free to interact more frequently and informally with teachers in our school building.

Because relationships between teachers and administrators/staff tend to be more personal and informal, there is a greater tendency for cooperation among the educational team. Teachers, who work in tight-knit communities like Lebanon Borough, are also more likely to be viewed as respected and valued citizens in our small town. This is very evident and clear across all levels of the spectrum in our community.

From a management perspective, smallness also permits changes in curricula and organization of instructional materials with relative ease. It becomes much easier to arrange schedules in order for children to participate in assemblies, field trips, parent- teacher conferences, and other special events. Our children are at the center of the school and discipline is not at all a serious problem resulting in an increase in time spent learning. Teachers have a sense of control over what and how they teach. A minimum of bureaucracy allows for more flexibility in decision making, and more creativity in the classroom.

In conclusion, the size of our school is ideal in my opinion for a school climate that is orderly, safe, serious, and attractive. Smaller classes are more conducive to enhanced pupil performance and provide more opportunities to adapt learning programs to adjust to individual needs. Teacher morale is very high and job satisfaction results in improved teaching and learning activities for children.

Are there challenges in small schools? Absolutely. Due to budget constraints, personnel and resources are often stretched thin. This places some burden on new mandates, and state or federally driven programs. But the resilience of small schools to “make do” with less is often balanced with the ability of small schools to deliver personalized instruction to every student.

Small schools need not apologize for their size. The strengths inherent in small schools clearly support characteristics and practices associated with what many researchers identify as “effective schools”. We are able to capitalize on the many advantages of our “smallness” in order to deliver the most meaningful and relevant education possible. I like to think of our school as a “Small School with a Big Heart”. That should say it all.

Research excerpts from: ERIC Clearinghouse ED265988. Barker, Bruce O. 1986-02-00

Lebanon Volunteer Fire Company

P.O. Box 145, 88 Main Street, Lebanon, NJ 08833

Phone – 908-236-2792 Fax – 908-236-6377

Email – sta18fire@yahoo.com

- **Vendor Fair October 8 @ 11:00 – 3:00**
- **Open House (fire truck rides, hot dogs, finger painting) October 16 in the afternoon**

To Advertise in The Lebanon Lantern and reach almost 1500 addresses within the community for the four publications annually:

	<u>Black & White</u>	<u>Color</u>
Business card size	\$ 50.00	\$ 75.00
Quarter page	\$ 75.00	\$115.00
Half page	\$150.00	\$225.00
Full page	\$300.00	\$450.00

Please contact the municipal office at 236-2425.

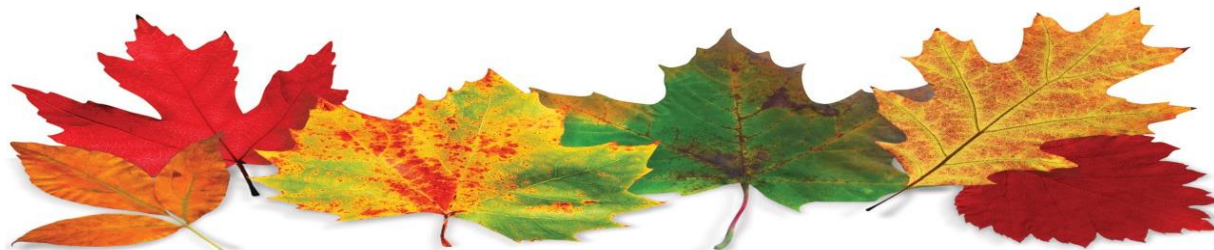
NORTH HUNTERDON-VOORHEES REFERENDUM

On the November 8, 2016 General and School Elections Ballot, the North Hunterdon-Voorhees Regional High School District is asking voters to support a referendum that will address facility projects to enhance students' learning environment and maintain safe facilities. Below is the list of projects in the referendum:

- **Replacement of windows at North Hunterdon High School** – the majority of the windows and components (about 15,000 square feet) would be replaced. Windows date back to 1957, 1968 and 1985.
- **Replacement of all windows at Voorhees High School** – all original windows and components (circa 1974) would be replaced.
- **Renovations of the library/technology center at North Hunterdon High School** – constructed in 1968, there have been no major renovations in nearly 50 years. Project includes new floor, ceiling, lighting, casework and furniture; area would be reconfigured to meet the needs of today's technology savvy, collaborative students and staff.
- **Renovations of the library/technology center at Voorhees High School** – constructed in 1974 with no major renovations in the last 42 years. Project includes new floor, ceiling, lighting, casework and furniture; area would be reconfigured to meet the needs of today's technology savvy, collaborative students and staff.
- **Upgrades to HVAC (heating, ventilation, air conditioning) system at North Hunterdon High School** – additions in 1950 and 1957, currently housing the social studies and world language classes, did not provide air conditioning. Existing HVAC unit would be replaced with new energy efficient unit which would provide air conditioning to 21 classrooms and ancillary spaces.
- **Replacement of the stadium visitor bleachers with ADA upgrades at Voorhees High School** – constructed in the 1970s, the bleachers and ADA ramp would be replaced with aluminum.
- **Replacement of stadium visitor/band bleachers and tennis court bleachers at North Hunterdon High School** – original bleachers, circa 1970s and 1980s, would be replaced with new, ADA compliant bleachers, permitting easier access for all spectators.
- **ADA accessibility to home stadium bleachers at Voorhees High School** – new ramp system, seating and sidewalk installed to provide ADA compliant accessibility.
- **Renovation of the athletic field house at North Hunterdon High School** – constructed in 1950 – one of the oldest facilities in the district – this nearly 70-year old facility requires interior and exterior upgrades including roof, floors, windows, lighting, HVAC and restrooms.

Total Projected Cost Not to Exceed = \$9,743,000. All projects and costs have been reviewed and approved by the New Jersey Department of Education.

If the referendum is approved on November 8, the high school district **will receive 29.65% in state aid, reducing taxpayers' share.** The state aid, combined with the district's retiring debt from the 2001 bond referendum (refinanced in 2009), will result in **no tax increase in any of the 12 communities in the regional district.** Please remember to vote on November 8th!



Leave Vacuuming Schedule

1st sweep week of October 24, 2016

2nd sweep week of November 21, 2016

3rd sweep week of December 12, 2016

Please have all leaves curbside the night before!

Food Drive



FOOD PANTRY DROP OFF AT BORO HALL



**BIG BROTHER AND BIG SISTER COAT DRIVE
DROP OFF NOW – OCTOBER 13TH @ BORO HALL
ALL SIZES WELCOME**



**Trick or Treating will take place in Lebanon
From 4 pm until 7 pm**

**Come join us in costume at the Lebanon Borough School
Monday, October 31st @ 7:00 pm
Prizes and Treats!**

**LOOKING FOR 4 VOLUNTEERS FOR THE
RECREATION COMMISSION AS OF JANUARY 1ST!!**

JOIN WITH A FRIEND!

For more information, contact Lisa
deputy@lebanonboro.com

Annual Tree Lighting

**Sunday, December 4th 6:30 PM
96 Main Street (State Police
Building)**

**Parade to a visit with Santa
Lebanon Borough School
All Purpose Room
All Ages Welcome!**

Refreshments and gifts courtesy of the Recreation Commission



**This is our last mailing of The Lebanon Lantern. Please register on
our website www.lebanonboro.com to be notified when the next
issue is available. Hard copies will be available in the municipal
building.**



**PLEASE REMEMBER TO SHOVEL
YOUR SIDEWALK!
ORDINANCE 88-18: REMOVAL OF SNOW AND ICE**

SECTION ONE:

A. The owner, occupant or tenant of premises abutting or bordering on any street in the Borough where sidewalks exist shall remove all snow and ice from the abutting sidewalks of the street, or in the event of ice which may be so frozen as to make removal impractical, shall cause the same to be thoroughly covered with sand or suitable material within twelve (12) hours of daylight after the snow falls or the ice forms thereon.

B. The owner, occupant or tenant of premises used by the public or business invitees shall remove all snow and ice from the sidewalks, streets, rights-of-way and parking areas by the public in the transaction of business thereat, and in the event of ice which may be so frozen as to make removal impractical, shall cause the ice to be thoroughly covered with sand or other suitable material within twelve (12) hours of daylight after the snow falls or the ice forms thereon.

SECTION TWO:

No owner, tenant or occupant of premises abutting on a street shall deposit snow or ice on any street, sidewalk or right-of-way, it being the intent and purpose of this provision to prohibit all persons from depositing snow and ice which accumulates within the private property belonging to that person on the sidewalks, streets or right-of-ways of the Borough.

SECTION THREE:

In case the snow or ice is not removed from the sidewalks or as set forth in Section One B-, or is deposited upon the sidewalk, street or right-of-way by the owner, tenant or occupant of any premises, it may be removed by the Borough, and the cost of removal as nearly as can be ascertained shall be charged against the real estate abutting or bordering, and the amount so charged shall become a tax lien in the same manner as the taxes next to be levied upon the premises and shall bear interest and be collected by the same officers and in the same manner as other taxes. The imposition or collection of a penalty for violation of any provisions of this Ordinance shall not constitute any bar to the right of the Borough to collect the cost, as certified, for the removal of snow or ice.

SECTION FOUR:

Any person violating the provision of this Ordinance shall be subject, upon conviction thereof, to a fine not to exceed Five Hundred Dollars (\$500.00). Each day that snow or ice shall remain shall be considered a separate offence.

Based in Clinton, NJ



Serving Central Jersey and
surrounding areas

info@titaniumtechservices.com

908.323.9899

www.titaniumtechservices.com

Is your computer running slow? Is your printer not working? Is your internet crawling?

Give us a call for any technology related issue you may be experiencing.

Schedule your free consultation today!



PO Box 2215
Flemington, NJ 08822

*Computer tune-ups
starting at \$129.95!*

908.323.9899

info@titaniumtechservices.com

www.titaniumtechservices.com

Our Services:

- Tune-Up
- Instructional Consultation
- Virus/Spyware Removal
- Network Setup
- In-home PC Set-up
- Smartphone/Tablet Setup
- Email Setup
- Printer Setup
- Hardware Installation/Repair
- Application Installation
- Backup Setup

For more information
please visit our website:

www.titaniumtechservices.com



STEIDLE PENSION SOLUTIONS, LLC

Steidle Pension Solutions, LLC

128 Main Street

Lebanon, NJ 08833

1.800.630.401K (4015)

www.sps401k.com

**401K Design • Installation •
Administration • Service**

LEBANON DOOR COMPANY

119 Main Street, Lebanon, NJ 08833

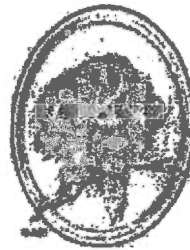
(908) 236-2620

Fax (908) 236-2946

- Raynor overhead doors
- Automatic door openers
- Storm doors and windows

Visit Our Showroom

lebanondoor@gmail.com



ALLSEASON'S

Flowers, Gifts & Greenhouses

908-236-6324

**62 Brunswick Ave. • Lebanon Borough
New Jersey 08833**

We Send Flowers Worldwide



DEPENDABLE FIRE EQUIPMENT CO, INC.

**Rte. 22 Eastbound Lane
1271 Lebanon Plaza**

Lebanon, New Jersey 08833

**CHARLES A. CARR
Sales Representative
dependablefire@gmail.com**

**TEL: 908 236-6025
FAX: 908 236-7179
CELL: 908 625-7980**

**HUNTERDON FURNITURE
RESTORATION AND UPHOLSTERY**

LEBANON ANTIQUES

Bob Kuna

1211 Route 22

Lebanon, NJ 08833

908 / 236-2851

www.hunterdonfurniture.com

**Collaborative Law, Mediation
and Arbitration Services**

MARY ANN BAUER

**A PROFESSIONAL CORPORATION
ATTORNEY AT LAW**

**Member of the American Academy
of Matrimonial Lawyers**

**Certified by the Supreme Court
of New Jersey as a
Matrimonial Law Attorney**

**27 Main Street
Lebanon, New Jersey 08833
(908) 236-8204
Fax (908) 236-8205**

**E-Mail: maryann@maryannbauerlaw.com
Website: www.maryannbauerlaw.com**

Bonner and Schaible Dentistry



Dentistry for the Whole Family

Sallyanne Bonner, DMD, MAGD

Vincent J. Schaible, DMD

Erin O'Grodnick, DMD

126 Main Street, Lebanon, NJ 08833

(908)236-9650

www.bonnerandschaible.com

Let our Family take care of your Family



WE ARE YOUR LOCAL



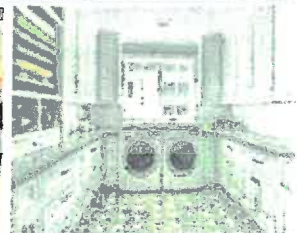
PLUMBER & REMODELER

remodel | kitchens | bathrooms | basements | additions | plumbing
water heaters | water conditioning | sump pumps | gas lines and more

CALL US TODAY

908-735-4438

www.FindSolutionsOnline.com





Open Arms Adult Day Club

Don't Wait! You need a Break.
Make an Appointment for your
Complimentary Visit.
908-840-4128

When your loved one needs a reliable adult day care, *Open Arms Adult Day Club* gives you "Peace of Mind". Our center in nearby Lebanon, NJ offers fun and engaging activities in a safe and nurturing environment.

Many of *Open Arms'* members have varying levels of physical and cognitive challenges such as: Alzheimer's, Parkinson's, Diabetes, etc. Other clients are isolated and lonely while their loved ones are working during the day.

Open Arms Adult Day Club has many activities throughout the day: *Tai Chi, seated aerobics, spa day, podiatry services, pet therapy, Bingo and much more.* You can rest assured that our Open Arms are here to help at reasonable rates. Compare us to other Adult Day Cares — we are a deal! Subsidized programs available.

FOR MORE INFORMATION

908-840-4128

www.openarmsdayclub.com

Eliana@openarmsdayclub.com

18b Maple Street

Lebanon, NJ 08873

(Located in the

Lebanon Reformed Church)

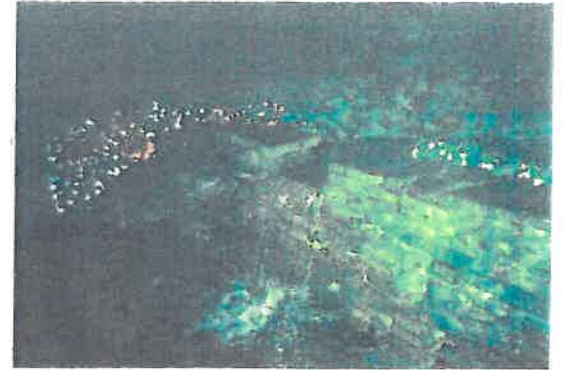
Hawk Rock Yard Works

(908) 391-3608 High Bridge, NJ



- ◊ Planting ◊ Trimming ◊ Edging ◊ Mulching
- ◊ Removals ◊ Minor Grading / Surface Drainage
- ◊ Lawn Repair ◊ Storm / Seasonal Cleanup ◊

License #13VH08559800



Bonnie Ogorzalek

Agent

Ogorzalek Family Agency

**Allstate New Jersey
Insurance Company**

8 Cokesbury Rd
Lebanon, NJ 08833

Phone 973-947-8571 / 908-236-8632

Cell 908-399-2789

Fax 908-236-8635

bonnieogorzalek@allstate.com

Auto, Home, Business, Life



Allstate
You're in good hands.®

24-Hour
Customer Service



Book Your Fun!

By Parents:
**School
Reward Days**
Fundraising
Festivals
Birthday Parties
Daycare Visits
We bring the FUN!

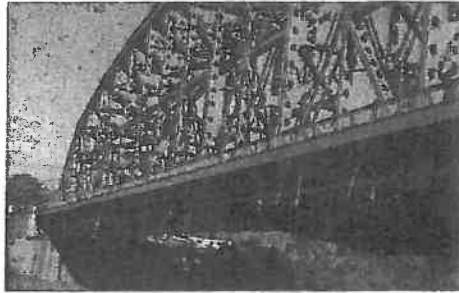
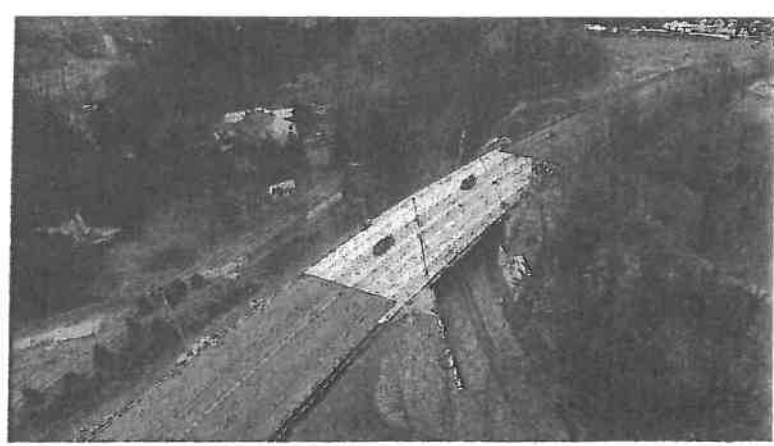


Greenman-Pedersen, Inc. is proud to support the Borough of Lebanon

Greenman-Pedersen, Inc. (GPI) is a nationally recognized engineering firm that has been working to better our communities by providing high-quality engineering services for 50 years.



New Jersey Branch: Lebanon
Satellite Offices: Red Bank, Oceanview
908.236.9001
www.gpinet.com



Bring Out the Best in Your Smile! **Krowicki Orthodontics**

Dr. Charles M. Krowicki

Call today for a
Complimentary
Consultation Visit!

63 Main Street
Lebanon NJ

(908) 236- 2802

Mon/Tues/Wed
8:30am-6:00pm

Thurs
7:00am-12:00pm



krowickiorthodontics.com

Hours: 8:30 am - 3:30 pm
Monday - Saturday

Joseph Lotito
CEO - President

Lebanon Cheese Company, Inc.

Serving the Finest Ricotta Since 1929

Manufacturers & Distributors of Italian Cheeses

Ricotta - Mozzarella - Pizza Cheese - Romano - Provolone

Wholesale & Retail

We also carry a full line of Gourmet Ravioli and Sauces.

**Please check us out on www.facebook.com/LebanonCheese
for a full list of products and prices.**

10% discount with The Lantern for borough residents!

Phone: (908)236-2611

PO Box 63

Fax: (908)236-6870

Lebanon, NJ 08833

The Borough of Lebanon Governing Body

Mayor Michael F. Reino	mreino@lebanonboro.com
Council President Richard Burton	rburton@lebanonboro.com
Councilman Sam Berger	sberger@lebanonboro.com
Councilman Robert Junge	rjunge@lebanonboro.com
Councilman Michael Piagentini	mpiagentini@lebanonboro.com
Councilman James Pittinger	jpittinger@lebanonboro.com
Councilwoman Bonnie Schmidt	bschmidt@lebanonboro.com

Municipal Contacts

Karen Romano, Administrator/Municipal Clerk	clerk@lebanonboro.com
Lisa Saharic, Deputy Clerk	deputy@lebanonboro.com
Kay Winzenreid, Tax Collector	tax@lebanonboro.com
Jeffrey Burd, Tax Assessor	assessor@lebanonboro.com
Anita Weingart, LBSA Secretary	LBSA@lebanonboro.com



GETTING MARRIED

**Download your Marriage Application at www.lebanonboro.com
Present the completed application 30 days before your event at
the Borough Hall with your partner and a witness.**

THE COMMUNICATIONS COMMITTEE ENCOURAGES COMMENTS AND ARTICLES.

Submission deadline for the Winter Edition is Friday, December 9, 2016.

You can email your submission to: bschmidt@lebanonboro.com

Please check the tab titled Announcements on our website <http://lebanonboro.com> for any updates or changes.

LEBANON BOROUGH MUNICIPAL BUILDING
Attn: Communications Committee
6 High Street
Lebanon, New Jersey 08833

PHONE: (908) 236-2425
FAX: (908) 236-2939
EMAIL: ADMIN@LEBANONBORO.COM

PRSR STD
ECRWSS
U.S. POSTAGE
PAID
EDDM RETAIL

Local
Postal Customer

IMPORTANT PHONE NUMBERS

EMERGENCY **911**
Lebanon Borough Volunteer Fire Department
(908) 236-2792
State Police
(908) 730-6100
Lebanon Borough Municipal Building
(908) 236-2425

Please Keep
Lebanon Borough
CLEAN



LEBANON BOROUGH HAS ITS OWN HOME ON THE WORLD WIDE WEB

Go to www.lebanonboro.com