



# The Lebanon Lantern

Spring 2014

6 High Street Lebanon, NJ 08833  
(908) 236-2425 Fax (908) 236-2939

[www.lebanonboro.com](http://www.lebanonboro.com)



On Saturday, March 8, 2014, the Hunterdon County Tricentennial Committee offered a Tavern Tour and Lecture at the Fox and the Hound while enjoying a historic menu. Our own historian, Joe Hauck, educated the group on the history of The Borough of Lebanon and the Tavern's building. County Historian Stephanie B. Stevens provided a talk on the history of Round Valley and the Round Valley Reservoir.

<http://www.hunterdon300th.org/>

## Historical Committee

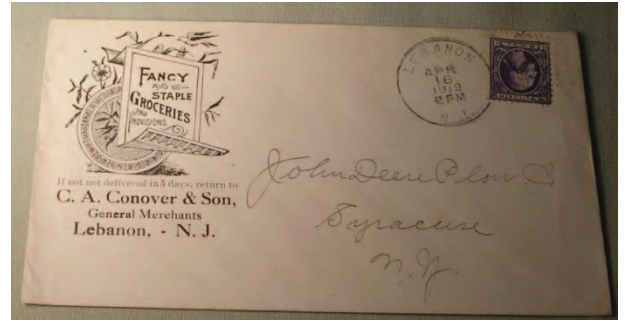
### **David Miller Kline – Entrepreneur**

The Lebanon Hotel is one of Lebanon's largest historic structures, located prominently at the main entrance to town. The history of the building and its first owner is one of our own American success stories. David Miller Kline was born on Dec. 29, 1784 and was the fifth child of Christian Kline and Elizabeth Miller. He was named after his mother's brother a merchant in German Valley and was apprenticed to his uncle at the age of fourteen; from him, he learned the mercantile business.

On Dec. 29, 1805, he turned 21 and his apprenticeship was now complete. He received the traditional \$100 and a new suit. The following day, he married Elizabeth Hager. He immediately set up shop in New Germantown, now Oldwick. In 1806, the NJ State legislature chartered the New Jersey Turnpike and it is likely that this had a bearing on Kline's decision to relocate to Lebanon in 1807. His new location was on the East side of Cherry St. near what is now Brunswick Avenue, but was then the Great Road from New Brunswick to Easton. Cherry St. intersected the Great Road and ran south toward Flemington. The land east of Cherry St. was previously the 271 acre estate of Walter Rutherford (lot 6 Benj. Morgan 1765 survey). The area near the early church and graveyard has been cited as the location of a "commons" where Jacob Corson a tailor and John Tway a blacksmith also plied their trades. Both of these men were married to daughters of William Huffman who owned both sides of the Great Road west of Cherry St. David's success must have been rapid as in 1811 he purchased the 41 acre tract including a dwelling, but excluding the church and graveyard for \$1400, from Jacob Nitzer (Deeds 18/245). The deed states that he lives on this tract.

While many expected the turnpike to be built near the current railroad route, the plans of 1813 showed the new road where Main St. currently runs. This path had been an alternate route since before the Revolution and was shown on the Erskine and DeWitt map 77A of 1777. David bought several additional tracts near his, and filed a road request in 1915 to enhance his business location via a proposed route from his house to Cokesbury (20-3-10 road request map). The request was denied, and in 1820, he purchased lot 3 of the division of William Huffman's estate from Jacob and Ann Corson (31/278) for \$100 - this 2.88 lot fronted on the turnpike route. In March of 1832, he was appointed postmaster of Lebanon and the store served that additional service until the Fall of 1834 (Walker, HC Postal History). Also in that year the road to Cokesbury was moved from Myrtle Avenue to its present location. In the spring of 1835, Elizabeth died at age fifty after bearing ten children - the last in 1829, and in the Fall of 1835, David married Margaret Portor (Deats marriages). At this point, it appears that David began to initiate plans to set up his surviving sons for the future. In December of 1836, his original home and lands were sold to his oldest son DMK Jr. (Deeds 65/371) for \$3500. Three other parcels were sold that year possibly providing the funding for the hotel and the Second Empire structure on the Southwest corner of the lot. The arrival of the railroad at Somerville in 1842, and Whitehouse in 1848, were no doubt figured into his plans.

In 1848, John R. was given the hotel and Lambert, having worked at his father's side in the store, was given that property. The 1850 census shows DMK owning \$16K in real estate, Lambert (born 1820) \$4K, and John (born 1822) \$4K. The 1851 Cornell map shows J.R. Kline Hotel at the current location. On Nov. 17, 1852 a descriptive for sale ad in the Hunterdon Gazette (previously printed in *The Lebanon Lantern*) described the property. DMK died in 1861 after actively engaging in commerce and real estate at least forty-five years and completing nearly as many real estate transactions.



## Volunteers Needed for Lebanon July 4th Celebration Committee

The 2014 July 4th Parade and Picnic will mark Lebanon Borough's 67th year in celebrating Independence Day. The planning for each year's celebration begins each January when the Lebanon 4th of July Celebration Committee meets to begin work on the many tasks that will need to be completed over the next 6 months leading up to the day of the parade. The committee is made up entirely of volunteers, and we are always looking for more help.

If you think you might be interested in volunteering, please consider coming to one of our meetings. Feel free to come and just listen if you like. There are many types of activities to get in involved in. We meet the last Thursday of every month at the Lebanon Borough Municipal Building on High Street. The next meeting is on March 27th at 7:30 pm.

Sam Berger, Co-Chair



## **Lebanon Reformed Church**

100 Brunswick Ave, Lebanon, NJ 08833

[www.lebanonreformedchurch.org](http://www.lebanonreformedchurch.org) (908) 236-6167 [lebanonrefchurch@aol.com](mailto:lebanonrefchurch@aol.com)

This spring, Lebanon Reformed Church is participating in the 2014 ECUMENICAL LENT SERIES with five other local churches. We will be hosting on Wednesday evening April 2, and welcome all *Lebanon Lantern* readers to attend. A soup supper will be served at 6:30pm in fellowship hall. At 7:15pm, Rev. Phil Pratt will present the topic "Why Serve" for learning and discussion.

The Maundy Thursday service on April 17 will start at 7pm. On April 20, Easter Sunday worship is at 11am. Please note there will be no Sunday school Easter Sunday.

On June 15, Sunday worship time changes to 10am for the summer.

SUNDAY SCHOOL is held at 9:45-10:45am. Adults meet in the Skunk House for Bible study and discussion. Preschool thru middle school aged children meet in fellowship hall. This year the younger children have had lessons and activities on the Good Sheppard, Noah's Ark, and John the Baptist. The older children have been discussing God's covenant promises with Adam and Eve, Noah, Abraham and Sarah and Moses. On Sunday June 8, the children will present a program during the worship service. Afterward, the annual church picnic will be held on the church lawn.

### **MINISTRIES**

USED BOOK SALE to benefit OPERATION SHOE BOX for military personnel will be held in fellowship hall on Saturday April 12 from 12noon to 4pm. Coffee will be served and baked goods will be available. Book donations for the sale can be dropped off in the fellowship hall on Sunday mornings beginning March 2. Details for cash donations to OPERATION SHOE BOX are on the LRC website [www.lebanonreformedchurch.org](http://www.lebanonreformedchurch.org).

VACATION BIBLE SCHOOL will start up again in July with Melanie and friends. Details will be on our website.

The LRC QUILTING GROUP of 15 women gathered for 3 or 4 hours once a month. Over time, 14 beautiful quilts were finished. During our November 17 worship, the quilts were displayed around the sanctuary for everyone to see. The quilts have been donated to The Good News Home for Women to comfort and encourage the residents.

### **GET CONNECTED**

*The Lebanon Lantern* readers are encouraged to submit prayer requests to LRC. You can email us at [lebanonreformedchurch@aol.com](mailto:lebanonreformedchurch@aol.com).

MOVIE NIGHT ON THE LAWN - The community is invited to this free event. Grab a friend and a chair or blanket, and enjoy an evening movie. Find date, time and details on our website [www.lebanonreformedchurch.org](http://www.lebanonreformedchurch.org).

COMMUNITY VOLLEYBALL will be starting up again this year on May 28, continue thru August 27, and will meet weekly on Wednesdays from 6:30-8pm on the church lawn. All ages and abilities are welcome to play or watch. For information call Robin Giordano (908)399-5016.

### **Did you know?**

Did you know that a faucet that drips one drop a second wastes 300 gallons a year? A running toilet can waste many thousands of gallons. Not only is this clean water wasted, but it is also treated by the sewer authority adding to their expenses and our bills.

## Lebanon Borough School

### **Full-Day Kindergarten Orientation/Registration for the 2014-2015 School Year**

**Wednesday March 19, 2014 at 1:30 pm in the school library**

The Lebanon Borough School offers a full-day Kindergarten Program. The full-day program runs from 8:40 AM to 3:00 PM daily. To be eligible for the 2014-2015 school year, children must be 5 years old on or before October 1, 2014, and be a resident of Lebanon Borough. Children are welcome to attend the orientation.

### **Preschool Orientation**

**Wednesday April 9th, 2014 in the school library**

The Lebanon Borough School Preschool program runs Monday through Friday from 8:40 AM to 11:15 AM. To be eligible for the 2014-2015 school year, children must be 3 years old on or before October 1, 2014. Children who reside in Lebanon Borough are given priority. If there are openings, children from out of town will be welcomed. Tuition is \$200 per month. Children are welcome to attend the orientation.

### Nurse's Notes from Mrs. Kosciolk, RN

On February 20<sup>th</sup>, Lebanon Borough School held a blood drive. The New Jersey Blood Services was able to collect 21 units of blood. Of that, 4 units of rare O negative blood was collected. This blood type is especially important in cases of emergencies. During the winter months, the blood supply is low. Blood transfusions help all ages in our community, including cancer, transplant and surgery patients, trauma victims, newborn babies and many others each day. I would like to thank the Lebanon Borough Community for all their support in making this blood drive a success.

On March 7<sup>th</sup>, the students, preschool through 6th grade will have a Dental Assembly. Local dentist, Dr. Erin O'Grodnick, will provide each student with a goody bag to help keep their teeth healthy.

The Lebanon Borough School Student Council received the Honor School Award in January during the New Jersey Association of Student Council Winter Conference. This award is given to schools that follow certain NJASC guidelines. This is the school's 7th year in receiving this award.

February is American Heart Month. Students at Lebanon Borough School showed their support by wearing red on Friday, February 7th. The Lebanon Borough School Student Council raised money for the American Heart Association by selling hearts during the month.

The Student Council is participating in Math-a-thon, a volunteer-based fundraising program for St. Jude Children's Research Hospital. Students are helping St. Jude continue its mission of finding cures and saving children with cancer and other serious childhood diseases. Math-a-thon participants complete Math-a-thon Funbooks at home and collect donations to St. Jude Children's Research Hospital.

The Lebanon Borough School Student Council continues to collect the following items at the school for recycling purposes: used inkjet cartridges, Campbell's soup education labels, and used cell phones. Please help support the students recycling efforts.

The Lebanon Borough School Library - In celebration of Read Across America and Dr. Seuss's birthday, Christine Petrell Kallevig visited the Lebanon Borough School on Monday, March 3, 2014. Mrs. Kallevig is an author, storyteller and origami artist. She told the students and staff stories and "illustrated" them by folding large scale origami. The students were also taught to fold their own origami creations. The visit was a huge success. The staff and students truly enjoyed themselves!

First Grader Erjona Kabashi and Senior Friend Carol Gulick



Photo submitted by Leah Driscoll

First Grade students have begun their much-anticipated program called Senior Friends Reading. The program runs each year from January through May, and incorporates reading practice as well as social interaction for first graders and Seniors from Lebanon and nearby communities. Every Friday afternoon in the library from 2:00-3:00, a first grader is paired with a “Senior Friend” to read stories from books or iPads, share activities, and converse. It is not only a great way for these budding readers to practice their skills with an enthusiastic listener, but also to practice important social skills with different people. They excel at both! If you would like to join our program, please get in touch with teacher Sue Ellen Turner at (908) 236-2448 X201, or at [seturner@lebanonschool.org](mailto:seturner@lebanonschool.org).

LBS 3rd Graders have been enjoying the chapter book, “The Chocolate Touch,” by P. Catling. Students are using comparison (compare and contrast) strategies to analyze one text with another: “The Chocolate Touch” with the Greek mythology of “The Midas Touch.”

We have also been learning the “How’s” and “Whys” with all things iPad! The new one-to-one technology is increasing our learning through high-interest apps that help us focus on our academic needs: math, reading in all areas, researching, and presenting our knowledge. We recently researched the Sochi Winter Olympics and those who honored the USA by competing in the 2014 Olympic Games. Each student created a Keynote slideshow to convey their knowledge, and connected their learning to an amazing art project with Mrs. Coop. Students chose different winter events and illustrated movement with figures made from pipe cleaners.



Photos submitted by Leah Driscoll

For the past 17 years, the sixth graders at LBS have been participating in THE STOCK MARKET GAME. The Stock Market Game program offers a vast library of learning materials correlated to national and state educational standards in Math, Business Education, Economics, English/Language Arts, Technology, Social Studies, and Family and Consumer Sciences. The program also teaches and reinforces these essential skills and concepts:

- Critical thinking
- Decision-making
- Cooperation and communication
- Independent research
- Saving and investing
- Letter writing

Students use real Internet research and news updates, making the simulation an even better mirror of the real marketplace. Starting with a virtual cash amount of \$100,000, the class builds a portfolio, researches, and evaluates their stocks. The students will write a letter to their company. They will also keep a daily spreadsheet related to the closing costs of their stocks. We will enlist Mrs. Adamaitis, our computer teacher, to help us create a power point presentation on our stock.

### **Environmental Commission**

Current plans for 2014 include maintenance of the path from Main St. to the Post Office. We have noticed that the shrubs and raspberries that line the path quickly intrude upon it making it difficult to escape the thorns.

While the snow this year has been quite a burden, it does have a plus side. Not only will the soil contain moisture this year, but snow brings with it nitrogen from the upper atmosphere. Nitrogen is the element that makes the grass green quickly. If you used potassium chloride or calcium chloride instead of rock salt which is sodium chloride, your plants will benefit from that as well. Commonly used rock salt on the other hand is harmful to most plants, trees and concrete.

### **The Lebanon Borough Shade Tree Committee**

The tree removal and pruning in the picnic area of the park is partially completed with the balance of the work to be done this spring. Once this is completed, we will work with the Recreation Committee to decide if new plantings are needed.

This year we will be required to have a new five year Community Forest Management Plan (CFMP) written. We have already applied for a 30% grant from The Green Communities Program. We will also hire a professional arborist to conduct a tree inventory and a hazardous tree assessment.

Now is an excellent time to prune the dead and damaged branches from trees and shrubs. The deep snow and heavy sleet broke many branches and clean cuts will enable plants and trees to heal over quickly. Remember do not cut flush with the trunk, but leave the branch collar which is a slightly ridged and raised area at the base of the branch.

#### **Did you know?**

Did you know that the Norway maple is the only maple that cannot be tapped for maple syrup? You can tell a Norway from a sugar, silver or soft maple by tearing a green leaf. If the leaf exudes a white milky sap, the tree is a Norway.

## **The Lebanon Borough Seniors Club**

The Lebanon Borough Senior Club meets the 4<sup>th</sup> Wednesday of the month at 10:00AM. Membership is open to anyone over the age of 55. Membership dues for Lebanon Borough residents is \$15.00 paid yearly and non-residents the yearly dues is \$20.00. Dues should be paid by April 1<sup>st</sup>. Please pay by check made out to Lebanon Seniors and give it to Leona Burton. Thank you.

Next month marks the ninth anniversary of the Lebanon Seniors Club. There will be a short business meeting at 11:00 a.m., on Wednesday, April 23<sup>rd</sup> followed by luncheon. There will be no cost to members. There will be sign-up sheets at our March meeting.

Bingo is held the second Monday of the month from 1:00 to 3:00 p.m. in the seniors' room at borough hall. Please consider coming - it's a lot of fun.

On Sunday, April 27<sup>th</sup>, there will be a luncheon and show at Voorhees High School. The free lunch will be served at 12:30 p.m. and the show, Shrek the Musical, costs \$13 and begins at 2:00 p.m. Adults who have seen the performance say it is a very funny show. Please contact Helen Pappas at 236-7112 for more information.

On Thursday, May 15<sup>th</sup>, there will be a luncheon matinee at the Hunterdon Hills Playhouse featuring "Busybody". The cost is \$50.50 which includes a full course meal, show, desserts, tax and gratuity. Theatergoers are asked to provide their own transportation and arrive between 10:45 and 11:00 a.m.

## **North Hunterdon High School**

2/24/2014 Annandale, NJ. – North Hunterdon High School (NHHS) Administration, Staff and Parents are pleased to announce the creation of the North Hunterdon Education Foundation (NHEF). With the public schools in our community continuing to experience severe budget challenges, the NHEF's purpose is to raise private support for programs that would possibly not happen in our school for an extended period of time. "Our community is extremely supportive, and I am very excited about the potential impact that a successful foundation will have on North Hunterdon High School", Dr. Richard Bergacs, Principal of North Hunterdon High School, said.

On February 7, a kickoff event for the foundation was held at Hawk Pointe Golf Club in Washington, NJ. Many community members, NHHS administration, and staff members came out to participate in the launch of this organization. Presentations from key members of the school community and the New Jersey Chamber of Commerce were given. Those presentations can be viewed at the website listed below.

Through community support, the North Hunterdon Education Foundation hopes to invest in targeted areas of science, technology, engineering and math as well as readiness for the global economy. Interested community members are encouraged to get involved and donate to the organization.

There are many sponsorship opportunities available and NHEF invites businesses to get involved. Interested parties can send inquiries to [nhef@nhhsfoundation.org](mailto:nhef@nhhsfoundation.org) to learn more.

The North Hunterdon Education Foundation (NHEF) is a non-profit 501(c)(3) pending organization. The NHEF's goal is to privately fund innovative, impactful educational experiences for the students at North Hunterdon High School. For more information, visit <http://www.nhhsfoundation.org/>

Tax deductible donations are payable to:  
NHEF, P.O. Box 488, Annandale, NJ 08801

## **PROPERTY TAX DEDUCTIONS**

### **\$250 PROPERTY TAX DEDUCTION FOR VETERANS OR SURVIVING SPOUSES N.J.S.A. 54:4-8.10 et seq.**

Two hundred fifty dollars (\$250) may be deducted each year from taxes due on the real or personal property of qualified war veterans or their unmarried surviving spouses. In 1999, a constitutional amendment increased the deduction from \$50 to \$100 for 2000; \$150 for 2001; \$200 for 2002 and \$250 per year thereafter.

**To qualify**, you must be an honorably discharged US Armed Forces war veteran or the unmarried surviving spouse of such a war veteran or the unmarried surviving spouse of a serviceperson who served in time of war and died while on active duty. You must be a property owner and a legal resident of New Jersey and, where applicable, prove that the deceased veteran or serviceperson was a legal resident of New Jersey. Claim Form V.S.S must be filed with your municipal tax assessor or collector.

### **FULL PROPERTY TAX EXEMPTION FOR 100% DISABLED VETERANS OR SURVIVING SPOUSES N.J.S.A. 54:4-3.30 et seq.**

100% permanently and totally disabled war veterans or the unmarried surviving spouses of such disabled war veterans are granted a full property tax exemption on their dwelling house and the lot on which it is situated.

**To qualify**, you must be an honorably discharged disabled veteran who had active service in time of war in the US Armed Forces, or the unmarried surviving spouse of such a disabled veteran. Unmarried surviving spouses of servicepersons who died in active service in time of war also qualify. Wartime service connected disability must be certified by the US Department of Veterans Affairs (VA.) You must be the full or partial owner and a permanent resident in the dwelling and legal resident of New Jersey. In the case of surviving spouses, the deceased spouse must also have been a legal resident of New Jersey. Claim Form D.V.S.S.E. must be filed with your municipal tax assessor.

### **\$250 REAL PROPERTY TAX DEDUCTION FOR SENIOR CITIZENS, DISABLED PERSONS OR SURVIVING SPOUSES N.J.S.A. 54:4-8.40 et seq.**

An annual \$250 deduction from real property taxes is provided for the dwelling of a qualified senior citizen, disabled person or their surviving spouse.

**To qualify**, you must be age 65 or older, *or* a permanently and totally disabled individual *or* the unmarried surviving spouse, age 55 or more, of such person. You must be a legal resident of New Jersey for one year immediately prior to October 1 of the year before the year for which the deduction is requested. You must be an owner of and a permanent resident in the dwelling on October 1 of the year before the year for which the deduction is requested. Income may be no more than \$10,000 during the year for which the deduction is claimed, excluding with restrictions, monies received from social security, Federal and State pension, disability and retirement programs. Claim Form PTD must be filed with your municipal tax assessor or collector. Additionally, Form PD5, Annual Post-Tax Year Income Statement must be filed with your tax collector each year after initial qualification.

# Lebanon Volunteer Fire Company



**Spring Forward!**

**Don't Forget To Change Your  
Smoke Detector Batteries**

## We need your help!!

We are always looking for individuals from the area we serve who would be interested in becoming volunteer firefighters or EMT's. If you would be willing to help your community in a very important way, take the time to stop in the firehouse any Monday night.

***Regular Firefighters-EMT's***

- Men and women over 18 years of age.

***Junior Firefighters***

- Men and women between 16-18 years of age.
- A great way to put your spare time to good use for the community.
- All mandatory training in Firefighting, Rescue and Emergency Medical Service provided free of charge.

**Please contact the Fire House 908-236-2792 or Stop in any Monday Night at 7 PM**



## Branch Pick Up

Watch for the Branch Pick-up Schedule on our website,

[www.lebanonboro.com](http://www.lebanonboro.com), and on the Electronic Board on Main St.

**No Branches larger than 4 inch diameter.**

**Each Street will be picked up ONCE!!**

**Did you know?**

Did you know that a faucet that drips one drop a second wastes 300 gallons a year? A running toilet can waste many thousands of gallons. Not only is this clean water wasted, but it is also treated by the sewer authority adding to their expenses and our bills.



# Lebanon Fourth of July

Box 158  
Lebanon, NJ 08833



# Celebration Committee

## GRAND MARSHAL NOMINATION

### Criteria for Selecting a Recipient

- The individual should be known by many people or groups to have made a significant impact or contribution to the Lebanon Borough community.
- The individual has demonstrated outstanding volunteerism in the community; or an act of heroism and continues to serve people in the community.
- The individual is dedicated to improving opportunities for all people in the emotional, physical and social environment in which they live.

**The individual nominated should have met a minimum of one of the above criteria points.**

All nominations will be kept confidential at all times. No candidate will be considered unless the nomination is received with an official form, filled out in full, with reasons stated.

It should be both the objective and subjective judgment of each year's judging panel whether or not a candidate is deserving of this award, basing their choice on tangible evidence, discussion and final voting.

Candidate's Name \_\_\_\_\_

Address \_\_\_\_\_

Town \_\_\_\_\_ State \_\_\_\_\_ Zip \_\_\_\_\_

Phone # \_\_\_\_\_

Candidate's qualifications for Grand Marshall:

\_\_\_\_\_

\_\_\_\_\_

\_\_\_\_\_

Nominated by \_\_\_\_\_

Phone \_\_\_\_\_

Address \_\_\_\_\_

Completed nomination forms will be accepted via mail only at the following address:

Lebanon 4<sup>th</sup> of July Committee, P.O. Box 158, Lebanon, NJ 08833

Deadline for Nominations is 4pm on April 14, 2014.

Nominations received after the published deadline date will not be considered.



## Lebanon Borough Park School

Sponsored by the Lebanon Borough Recreation Commission

**When: June 23<sup>rd</sup> - August 1<sup>st</sup>**

**Closed Friday July 4<sup>th</sup>**

**Times: Monday - Friday**  
9 a.m. - 12 p.m.

**Where: Lebanon Borough Hall**  
6 High Street


**Eligibility:** The Lebanon Borough Park School is open to all children who are 3.5 years old by June 23-2014 to children who will finish 6<sup>th</sup> grade by June 2014. 3.5 year olds must be completely potty trained.


Registration form:


<http://lebanonboro.vpweb.com/upload/2014%20Park%20School%20Registration%20Form.pdf>





# Easter Egg Hunt

 Saturday, April 12<sup>th</sup>

 Holjes-Sheppard Memorial Park

 11:00 AM

 Rain Date Sunday, April 13<sup>th</sup> 12 pm

 Sponsored by Lebanon Borough Recreation

## Fishing Derby



Saturday, May 10<sup>th</sup>

The Baptist Camp Blossom Hill road Clinton Township

Fishing Derby: 9 -11 am

Prizes!

Please bring your own Equipment and Bait!

Sponsored by Lebanon Borough Recreation

Join us for **Zumba® Fitness** at

North Hunterdon High School!



*Tuesdays and Thursdays* 6-7pm



\$5.00 to attend

\*Proceeds go toward NHHS PTSA Project Graduation!!



PARTY  
YOURSELF  
INTO SHAPE.™



## Meals on Wheels Offers Raffle Airline Tickets

Meals on Wheels in Hunterdon's "Fly Away With Me" 2014 raffle fundraiser offers a chance to win two round-trip United Airline tickets to fly anywhere in the continental United States (maximum value \$1,000). The cost of a single raffle ticket is \$20, and a book of five tickets for \$100. Only 750 tickets will be sold! The airline tickets will be good for one year from the drawing date of May 30, 2014. Raffle tickets will be available March 1st at all Meal on wheels congregate site locations (4 Gauntt Place, Flemington; 104 Allerton Road, Annandale and 25 South Main Street, Lambertville) and at the agency's office at 5 Walter Foran Blvd., Suite 2006, Flemington. For details call 908-284-0735, email [mowhunt@embarqmail.com](mailto:mowhunt@embarqmail.com) or visit our website [www.mowih.org](http://www.mowih.org).

The mission of Meals on Wheels in Hunterdon is to assist the homebound elderly/disabled of Hunterdon County to maintain their independence by enhancing their nutritional health, thereby avoiding unwanted institutionalization. Proceeds from the "Fly Away With Me" Fundraiser will support programs at Meals On Wheels. Each raffle ticket purchased will provide approximately four meals to a homebound senior. Last year 57,956 meals were served to the elderly and/or disabled of Hunterdon County. How can you help? Buy that winning ticket now!

*Meals on Wheels in Hunterdon, Inc. is recognized as tax-exempt by the IRS under Section 501(c) (3).*

### Did you know?

Did you know that in 1735 there were 98 families already squatting on the West Jersey Society's Great 100,000 acre tract. All of these early settlers agreed to sign leases.



# WUSHU TAEKWON-DO ACADEMY

DEVELOP YOUR MIND & BODY

WUSHU TAEKWON-DO TAI-CHI KICKBOXING

- SELF DISCIPLINE
- FOCUS
- SELF CONFIDENCE
- HEALTH & FITNESS
- SELF DEFENSE
- STRENGTH & FLEXIBILITY
- REDUCED STRESS LEVELS
- INTEGRITY & RESPECT

CALL TODAY FOR YOUR FREE TRIAL CLASSES

TEL: (908) 437-1221

1386 US 22 W, LEBANON, NJ 08833

[WWW.WUSHUTKDACADEMY.COM](http://WWW.WUSHUTKDACADEMY.COM)

# L & T IMPORT & EXPORT CORP

## Your One-Stop for Industrial Construction Materials

Bridge legs • Scaffolding  
Debris netting • Boots • Rain Suits  
Gloves • Safety Rope

**Call (908) 236-8806  
to place your order today!**

*See our complete list of products at  
[www.LTimportexport.com](http://www.LTimportexport.com)*



### LEBANON DOOR COMPANY

119 Main Street, Lebanon, NJ 08833  
(908) 236-2620

Glenn Coats, Proprietor  
Established 1957

Fax 908-236-2946  
Home 908-730-6536

Certified by the Supreme Court  
of New Jersey as a  
Matrimonial Law Attorney



**MARY ANN BAUER**  
A PROFESSIONAL CORPORATION  
ATTORNEY AT LAW

27 Main Street  
Lebanon, New Jersey 08833  
(908) 236-8204  
Fax (908) 236-8205

E-Mail: [maryann.bauerlaw@earthlink.net](mailto:maryann.bauerlaw@earthlink.net)

### HUNTERDON FURNITURE RESTORATION AND UPHOLSTERY

LEBANON ANTIQUES

**Bob Kuna**  
1211 Route 22  
Lebanon, NJ 08833  
908 / 236-2851

[www.hunterdonfurniture.com](http://www.hunterdonfurniture.com)



**Claire & Edward J. Turkiewicz, Jr.**  
Sales Representatives

Office: 908.735.8140  
Fax: 908.735.8372  
Claire's Cell: 908.310.7496  
Ed's Cell: 908.310.6639  
Email: [turkiewicz@earthlink.net](mailto:turkiewicz@earthlink.net)  
Web: [www.Turkiewicz.Biz](http://www.Turkiewicz.Biz)

9 W. Main Street  
Clinton, NJ 08809



**Weichert  
Realtors**

# STEIDLE PENSION SOLUTIONS

Steidle Pension Solutions, LLC  
128 Main Street  
Lebanon, NJ 08833  
1.800.630.401K (4015)  
[www.sps401k.com](http://www.sps401k.com)

401K Design • Installation • Administration • Service

# SMILE!

## KROWICKI ORTHODONTICS

**Dr. Charles M. Krowicki**

Diplomate, American Board of Orthodontics  
63 Main Street, P.O. Box 545 • Lebanon, NJ 08833

*Creating Beautiful Smiles For  
Over 20 Years*

Complimentary  
Initial Exam

This appointment will allow us to examine your bite, the alignment of your teeth, the growth of your jaws, facial appearance and your overall oral health.

For Your Convenience  
We Offer Morning Hours  
Starting at 7am on Thursday  
And Evening Hours to 6pm on  
Monday, Tuesday & Wednesday

Ask Dr. Krowicki About  
**The Damon System Modern Teeth Straightening**  
*Quick & Comfortable With Extraordinary Results!*  
*Less Time Than Traditional Braces. Get The Smile You And Your  
Family Have Always Wanted, Usually Without Extractions Or Headgear.*

**908.236.2802 • [www.krowickiorthodontics.com](http://www.krowickiorthodontics.com)**



**Dentistry For The Whole Family**

Sallyanne Bonner, D.M.D., M.A.G.D.  
Vincent J. Schaible, D.M.D.  
Erin O'Grodnick, D.M.D.

126 Main Street  
Lebanon, NJ 08833  
(908)236-9650

[WWW.bonnerandschaible@comcast.net](mailto:WWW.bonnerandschaible@comcast.net)

**Serving all levels of government in  
New Jersey with Engineering and  
Construction Services for Over 25 Years**

Transportation Design & Planning  
Civil & Structural Engineering  
Construction Management & Inspection  
Traffic Analysis & Engineering  
Dam Analysis & Rehabilitation  
Asset Management / GIS

**GPI** Greenman-Pedersen, Inc.  
Engineering and Construction Services

Lebanon, NJ 908.236.9001 gpinet.com



Rainbow Dike and Dam



NJ Turnpike East Viaduct



Habitat for Humanity

Town and Country Office Solutions LLC  
*Productive Environments*

**Alice Roth Fox**  
*Bookkeeping, Personal Assistant, Organizing  
Hourly - Small Business - Residential*



12 Amy Court  
Lebanon, New Jersey  
08833  
908-236-0660  
alice.fox@earthlink.net

**To Advertise in The Lebanon Lantern**  
and reach almost 700 addresses within the  
community for the four publications annually,  
the charge will remain the same in 2014:

- \$50 business card size**
- \$75 quarter page**
- \$150 half page**
- \$300 full page**

Please contact the municipal office at 236-2425.

**WHERE IT'S ALL ABOUT YOU**

*Lace and Beads*

BRIDAL COUTURE AND MORE  
BRIDAL PLUS SIZES  
WEDDING GOWNS, BRIDESMAIDS  
MOTHER OF THE OCCASION  
FORMAL EVENING & PROM  
INVITATIONS & JEWELRY

WWW.LACEANDBEADSBRIDAL.COM  
**(908) 840-4470**



*Adristy*  
S.A.L.O.N

MASSAGE & MEDITATION  
ORGANIC PRODUCTS  
FULL SERVICE SALON

WWW.ADRISTYSALON.COM  
**(908) 236-7878**

ADRISTY SALON

**30% OFF**

**ONE SERVICE\***  
\*NEW CUSTOMERS ONLY

148 MAIN STREET AT THE OASIS COMMONS • ROUTE 22 • LEBANON, NEW JERSEY 08833

# Healthy Balance

The Small Store... That's Big On Your Health.



**Gluten Free  
Products**

**Herbs  
Vitamins**

Friendly, Knowledgeable  
Customer Service for over 17 years

Mon. - Fri. 9-6 Sat. 9-5 Sunday Closed

The Annex at Lebanon Plaza • 1265 Route 22 East  
Lebanon, NJ 08833 • 908-236-0440



## ALLSEASON'S

Flowers, Gifts & Greenhouses

908-236-6324  
908-236-7300

62 Brunswick Ave. • Lebanon Borough  
New Jersey 08833

We Send Flowers Worldwide

### *Center for Natural Health and Rehabilitation*

**Dr. Jody L. Serra**

*Chiropractic Physician*

**Family Wellness Care** 1386 Route 22 West

**Sports Injuries** Lebanon NJ 08833

**lesspainbetterhealth.com** 908-236-6353

**Hours By Appointment**

Hours: 8:30 am - 3:30 pm  
Monday - Saturday

Joseph Lotito  
CEO - President

## Lebanon Cheese Company, Inc.

Serving the Finest Ricotta Since 1929

Manufacturers & Distributors of Italian Cheeses

Ricotta - Mozzarella - Pizza Cheese - Romano - Provolone

Wholesale & Retail

We also carry a full line of Gourmet Ravioli and Sauces.

Please check us out on [www.facebook.com/LebanonCheese](http://www.facebook.com/LebanonCheese)  
for a full list of products and prices.

**10% discount with The Lantern for borough residents!**

Phone: (908)236-2611

Fax: (908)236-6870

PO Box 63  
Lebanon, NJ 08833

## The Borough of Lebanon Governing Body

Mayor Michael F. Reino	mreino@lebanonboro.com
Council President Richard Burton	rburton@lebanonboro.com
Councilman Sam Berger	sberger@lebanonboro.com
Councilman Robert Junge	rjunge@lebanonboro.com
Councilman John Knoble	jknable@lebanonboro.com
Councilman James Pittinger	jpittinger@lebanonboro.com
Councilwoman Bonnie Schmidt	bschmidt@lebanonboro.com

### Municipal Contacts

Karen Romano, Municipal Clerk	clerk@lebanonboro.com
Lisa Saharic, Deputy Clerk	deputy@lebanonboro.com
Kay Winzenreid, Tax Collector	tax@lebanonboro.com
Jeffrey Burd, Tax Assessor	assessor@lebanonboro.com



### GETTING MARRIED

Download your Marriage Application at [www.lebanonboro.com](http://www.lebanonboro.com)  
Present the completed application 30 days before your event at  
the Borough Hall with your partner and a witness.

**THE COMMUNICATIONS COMMITTEE ENCOURAGES COMMENTS AND ARTICLES.**

Submission deadline for the Summer Edition is Friday, June 6, 2014.

You can email your submission to: [bschmidt@lebanonboro.com](mailto:bschmidt@lebanonboro.com)

Please check the tab titled Announcements on our website <http://lebanonboro.com> for any updates or changes.

