



# The Lebanon Lantern

Spring 2013

6 High Street Lebanon, NJ 08833  
(908) 236-2425 Fax (908) 236-2939  
[www.lebanonboro.com](http://www.lebanonboro.com)



The Lebanon Borough Seniors enjoyed a gathering at Beaver Brook Country Club during the holidays. Please check our website <http://lebanonboro.com> for additional photos.

**Lebanon Borough Sewerage Authority**

## **Smoke Testing**

**The Lebanon Borough Sewerage Authority will be conducting leak tests of the sanitary sewer system in your area on or about 3/25/2013, weather permitting, and using what is called a smoke test. The work will be done by an outside contractor and observed by staff from the Authority's engineering services firm.**

This smoke test will reveal places where storm and surface waters are entering the Borough's sewers and where sources of sewer odors may exist.

**The testing consists of forcing a special, non-toxic smoke into the sewer lines in your neighborhood.**

- The smoke is manufactured for this purpose and leaves no residuals or stains, and has no effect on plants and animals.
- Direct long-term contact with the smoke may cause some minor irritation such as sneezing, scratchy throat, and/or watery eyes. However, the duration of the testing in your area will be limited to reduce the potential of such symptoms occurring.

**To avoid smoke from unnecessarily entering your structure, we advise residents to run water into all of the drains for one minute, especially those used infrequently. Smoke should not enter your structure unless:**

- You have defective, damaged, or improperly installed traps, tubs, basins, shower, pipes, and connections, or;
- Infrequently used drains are dry.

**If you do see or smell smoke in your structure, immediately report it to the Testing Personnel at the site, the local Office of Emergency Management (OEM), or Hunterdon County 911. 911 and OEM will screen calls for determination of the need to dispatch the local fire personnel to any reported locations.**

This evidence of smoke may mean that harmful gases from the sewer may have been entering your structure.

- Location, identification, and correction of the source of smoke entering your house is strongly recommended.
- Do not be concerned if you see testing smoke coming from your rooftop sewer vents, this is normal.
- At the completion of the testing, the Authority will be analyzing the findings and issuing letters to locations where smoke was observed between the roadway and structure so that repairs can be made.

**If you have any questions or desire more information, please call (908) 236-2704 from 8:30 am to 12:00 pm, or (908) 892-2320 after hours.**

As part of the smoke testing process, you may notice paint markings in the street, curb, or grass. The paint is temporary and will disappear over time. The markings are used as a reference for Authority personnel. The markings do not necessarily mean you have a problem.

### **Did You Know?**

On October 19th 1898, The Hunterdon Republican reported that Joseph Stryker lost 20 chickens to thieves that day. Mr. Stryker was the owner of the confectionery store that was demolished in the 1918 explosion. He and 12 other Lebanon men were killed.

## **The Lebanon Borough Shade Tree Committee**

It isn't too late to prune, and so the Liberty Elm was quickly pruned before the predicted heavy snows of March 7-8. Recently planted trees and shrubs are typically in need of pruning for several years after planting in order to produce the proper shape and structure conducive to a healthy and strong plant. Most trees need to be trained to a single dominant central leader, and it takes several years of pruning to reduce and remove forked crowns, which will only break as the tree matures. Side branches need to be kept from growing too large and too numerous. An excellent profusely illustrated book on the subject is by Gilman from Delmar Press. A copy of the first edition can be found used for a modest price and it is well worth it if you care to take care of your trees.

This is also a good time to fertilize trees and shrubs. The large growth spurt and flowering in the Spring take their toll on stored up energy. Fertilizing provides needed nutrients to continue growing through the Summer. If you fertilize, be sure to water during the hot dry summer weeks.

We have started to prune the newer trees in the Holjes-Shepperd Park. They are growing rapidly and need work now to prevent splits and wind damage later. Removal of co-dominant leaders, which would later split and open up the canopy to allow sun in and the wind to pass through, are some of the goals. Getting them shaped correctly will enable the trees to provide nice shade for many years.

It is time to decide what you want to do about replacing trees that were lost this winter due to storms. The right tree in the right spot will beautify your property while providing shade from the hot summer sun, or if an evergreen, protection from cold westerly winter winds.

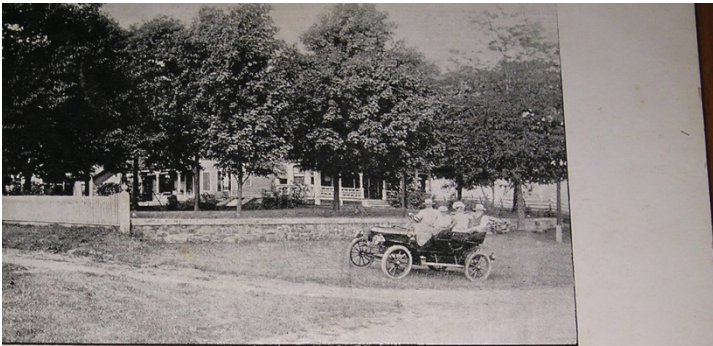
## **Historical Committee**

Hunterdon County is preparing for a monster birthday party! Next year 2014 is the 300th anniversary of the formation of the county. It was formed from the northern end of Burlington County. New Jersey has a birthday next year too. It was given a charter in 1664 which makes the state 350 years old in 2014. The county has formed a committee headed by Marcia Karrow to plan for a yearlong calendar of activities; that means 365 events!! There are many ideas circulating as well as plans for fund raising to enable the celebration. Most towns will be hosting historic presentations and/or history walks. Lebanon Borough will plan and conduct our share of events. Dan Campanelli, one of Hunterdon's famous artists, has provided a painting of the Hunterdon Courthouse, the location of the Lindbergh trial. A limited edition of prints will be available with proceeds going to the committee. For additional information visit the website - [Hunterdon300th.org](http://Hunterdon300th.org)

We have received more donated photos of the aftermath of the 1918 explosion and copies of newspaper coverage from the New York Tribune and the New York Times. We now have enough material for a display that tells the story of this tragic event. We have also received a picture postcard dated 1952 showing an aerial view of the "Twinkling Star Farm" Lebanon, NJ. It appears to be outside the Borough. Does anyone know the location?

**Did You Know?**

George Clark's home was the large Victorian on the corner of Main Street and Blossom Hill Road. His estate included Clark Road as a private road in Lebanon. Mr. Clark built the creamery by the railroad, which now is home to the Lebanon Cheese plant, and was probably Lebanon's first millionaire.



Residence of George Clark, Sr., Lebanon, N. J.

*according to Plover Mrs. L. A. W.*



Residence of George Clark, Jr., Lebanon, N. J. Pub. for Harold Sherman



## The Lebanon Borough Seniors Club

The Lebanon Borough Senior Club meets the 4<sup>th</sup> Wednesday of the month at 10:00AM. Membership is open to anyone over the age of 55. Membership dues for Lebanon Borough residents is \$15.00 paid yearly and non-residents the yearly dues is \$20.00.

Our next meeting will be on Wednesday, March 27th at 10:00 a.m. at Lebanon Borough Hall. Our guest speaker will be Debbie Baucon from Rolling Hills of Hunterdon Care Center.

### TRIPS PLANNED FOR 2013

**4/28/2013** Voorhees High School Lunch and Show

Trip cost: \$13.00

Includes Buffet at 12:30PM and Show (BYE, BYE BIRDIE)

Need to provide own transportation

**5/15/2013** Lakeside Manor, Hazlet New Jersey

They say, "Shut Up, Sit Down & Eat" the only cure for Italian insanity. Enjoy the roller coaster ride of laughter, insight and revelation. Come join us for a unique event filled with hilarious dysfunction Italian style!!!! Menu includes appetizer, salad, choice of three entrees, dessert, coffee or tea and soda during lunch (discount mixed drinks available). Each patron receives a coupon good for one complimentary glass of wine or beer.

Trip Cost: \$64.00 Members \$76.00 Non-members

Pick up time at Lebanon Plaza: 10:00AM Return time: 4:30PM

**6/26/2013** Lebanon Borough Senior Club Picnic – Members Only

**9/10/2013** Mount Haven Resort-Penns Landing PA

Aloha! Travel to the beautiful Mount Haven Resort for a Hawaiian Luau!

Trip Cost: \$54.00 Members \$66.00 Non-members

Pick up time: 8:45AM Return time: TBD

**10/22/2013** Plazl Brauhaus, Pomoma, NY

Trip Cost: \$59.00 Members \$71.00 Non-members

Enjoy a day of music, dancing entertainment and Gemutlichkeit!

Pick up – 8:30Am Return time TBD

Make checks out to the Lebanon Borough Senior Club. All trips leave from behind Lebanon Plaza by the Tile Barn. If you are interested in any of these trips or need additional information please call Mary Ann at (908) 236-8291.





**Round Valley United Methodist Church**

30 Main St., Lebanon, [www.roundvalleyumc.org](http://www.roundvalleyumc.org)

Rev. Andrew Paek (908) 236-2232

Our successful annual Valentine Celebration Breakfast was rescheduled from Feb 9th to Feb 16th due to the snow & ice.

It was necessary to cancel the Indoor Yard Sale because there were only 2 or 3 people who responded to rent tables/spaces. We hope to reschedule soon, perhaps April.

Watch for ads and check out our marquee for our upcoming roast beef dinner with all the trimmings! It promises to be delicious!

We will join other churches for the sunrise service on Easter morning at 6:30 am at the Memorial garden at the Changewater Church. Our regular service will be at 11:00 am, join us!

Pastor Paek will start a Lenten Bible Study on March 11th that will run for 6 weeks each Monday at 7:00 pm. The study will be based on Adam Hamilton's new book, "The Way: Walking in the Footsteps of Jesus". Contact Pastor Paek if you wish to join the study to be sure we have ample books. We meet in the Fellowship Room at the church.

We support the Food Pantry that is located in the downstairs of the church and the Cluttered Closet Thrift Store (part of their profit goes to the food pantry). We have been supporting a young East Indian woman since she was a child to get her an education and proper food as well as other outreach programs closer to home.

We have a chancel choir and a bell choir as part of our varied music programs. Several young people play solos (sax, trombone, flute) during our service. We welcome visitors and those searching for a church home. Join us!

**Did You Know?**

On February 3rd 1887, John H. Knox announced the formation of the Knox Fence Company. By 1912, the company had 125 employees. The company installed fencing from Pennsylvania to Rhode Island including some of the larger reservoirs in NY State.

**The Recreation Commission**

The Recreation Commission has an opened position for the Park School Director. If you are interested, please contact Karen Romano in the municipal office at (908) 236-2425.

## Environmental Commission

The Bridge behind the OEM building that starts the trail to the Lebanon Plaza sustained a direct hit from a large maple tree during hurricane Sandy. We have applied for FEMA aid and will get the bridge repaired when the weather improves.

It is good to see so many people who are taking recycling seriously. It is not only good for the environment, but also for the Borough's budget. It costs about 3.75 cents in tipping fees for every pound of waste that goes to the landfill. That doesn't sound like much, but, of course, we produce many tons of waste. Glass bottles are relatively heavy so make sure those end up in the single stream recycling container you put out. Often overlooked is the combined weight of "heavy metal", and I don't mean Metallica, but rather cast iron radiators, old pipes, broken bicycles, big appliances, etc. Not only do we pay to dump these items, but they are sought after by individuals who make a living scrapping metal. You may have noticed ads for old cars (any car is worth \$300 in scrap, as is), machinery, farm equipment etc. One business even advertises for planes and UFOs! A 100 pound radiator costs the Borough \$3.75 to send it to the dump, and it is worth \$10-12 at the salvage yard. If you take metal to the salvage yard yourself, get a weight receipt and the Borough clerk will see to it that we get credit for the recycled weight. The following year the Borough receives money from the State based on our total weight of recycled material.



The following committees are in need of volunteers:

The Environmental Commission (2 seats)

The Historical Committee (1 seat)

The Recreation Commission (1 seat)

The Shade Tree Commission (2 seats)



Meet Alex Pittinger, Lebanon's newest volunteer!

If you are interested in joining any of these groups, please contact Karen Romano at 236-2425.

### **Did You Know?**

Andrew B. Rittenhouse was hired as a teacher for the Lebanon Public school in July of 1887. In 1926 he became Lebanon Borough's first mayor after the borough broke away from Clinton Township over a disagreement regarding the need for an additional school proposed to be built in Annandale.

### **Lebanon Borough School**

#### **JUMP ROPE FOR HEART**

#### **Student Newspaper Release**

#### **JUMP ROPE FOR HEART EVENT AT LEBANON BOROUGH A SUCCESS!**

On February 21, 2013, students at Lebanon Borough School jumped all over heart disease and stroke by participating in Jump Rope For Heart. The students raised more than \$600 for the American Heart Association, which funds research, programs and education to fight heart disease and stroke, our nation's No. 1 and No. 4 killers.

"I am so pleased with the success of this year's event," said Miss Pritchard, Jump Rope For Heart coordinator. "We all had a lot of fun, and the kids enjoyed learning about the importance of physical activity and how they can play a role in saving lives."

Jump Rope For Heart is a program that promotes physical activity and heart health through jumping rope. It is co-sponsored by the American Heart Association and the American Alliance for Health, Physical Education, Recreation and Dance.

#### **Kindergarten Open House**

**Friday April 12, 2013**

**10 am to 11 am**

**Preschoolers Welcome**

During the Open House, Lebanon Borough School will host the Kindergarten orientation in the library. Parents and children are welcome. Registration packets will be distributed at this time.

Preschool registration will begin in March for the 2013-2014 school year. Preschool will be held in the morning from 8:40 am – 11:10 am. The child must be 3 years old by October 1<sup>st</sup>. Please call the office for any questions and to pick up a registration packet.

PLEASE VISIT OUR LEBANON BOROUGH SCHOOL'S WEBSITE FOR FURTHER INFORMATION.

<http://lbsd.schoolwires.com/site/default.aspx?PageID=1>

### **Did You Know?**

In 1912 Lebanon was a resort destination in the railroad promotional publication called "Along the Shore and in the Foothills". The 49 mile trip from Newark cost \$1.25 one way and \$2.15 for an excursion. One could stay at the Lebanon Hotel, which had a capacity of 20 persons, for \$2 a day or \$9-11 for a week. Several private homes provided lodging for \$1 a day.

# Easter Egg Hunt

Presented by The Lebanon Borough Recreation Commission

**Saturday March 23rd**

**Holjes-Sheppard Memorial Park**

**11:00 AM**



(Rain date Sunday, March 24th 12pm)

# Lebanon Borough *Fishing Derby*



Saturday, May 11<sup>th</sup> from 9-11 am

The Baptist Camp

Blossom Hill Rd, Clinton Township

Prizes!

Please bring your own equipment and bait!

\*\*\*\*\*

Sponsored by Lebanon Borough Recreation



**TOWN WIDE YARDSALE**  
**SEPTEMBER 21, 2013**

**8AM TO 4PM**

**(RAIN DATE SEPT. 22ND 11AM TO 4PM)**

**PERMITS ISSUED AT BORO HALL \$5.00**

# Property Tax Reimbursement (Senior Freeze) 2012 Eligibility Requirements\*

You must meet all of the following requirements:

- You were age 65 or older as of December 31, 2011, or if under age 65, you were receiving Federal Social Security disability benefits as of December 31, 2011, *and* December 31, 2012;  
*and*
- You have lived in New Jersey continuously since December 31, 2001, or earlier, as either a home owner or a renter;  
*and*
- You have owned and lived in your home (or have leased a site in a mobile home park for a manufactured or mobile home that you own) since December 31, 2008, or earlier;  
*and*
- You paid the full amount of the 2011 property taxes due on your home by June 1, 2012, and paid the 2012 property taxes by June 1, 2013;  
*and*
- Your total annual income for 2011 did not exceed \$80,000\* and for 2012 did not exceed \$82,880.\* **Note:** With very few exceptions, all income received during the year must be taken into account to determine eligibility (including social security, pension income, etc.).

\* Eligibility requirements, including income limits, and benefits available under this program are subject to change by the State Budget.

## **Other Property Tax Benefits**

- **Annual Property Tax Deduction for Senior Citizens, Disabled Persons:** Annual deduction of up to \$250 from property taxes for homeowners age 65 or older or disabled who meet certain income and residency requirements. This benefit is administered by the local municipality.
- **Annual Deduction for Veterans:** Annual deduction of up to \$250 from taxes due on the real or personal property of qualified war veterans and their unmarried surviving spouses/surviving civil union partners/surviving domestic partners. This benefit is administered by the local municipality.
- **Property Tax Exemption for Disabled Veterans:** Full exemption from property taxes on a principal residence for certain totally and permanently disabled war veterans and their unmarried surviving spouses/surviving civil union partners/surviving domestic partners. Unmarried surviving spouses/surviving civil union partners/surviving domestic partners of servicepersons who died on wartime active duty may also qualify. This benefit is administered by the local municipality.

## **Homestead Benefit Program**

**Current Year (2011) Homestead Benefit.** Most eligible homeowners will receive their 2011 homestead benefit as a credit applied to property tax bills in August 2013. Those homeowners who either sold their home prior to filing the homestead benefit application, or whose principal residence was a unit in a co-op or continuing care retirement community will be issued a benefit in the form of a check or direct deposit in August 2013. Tenants will not receive a 2011 rebate. The deadline for filing 2011 applications was December 14, 2012.

**To Advertise in The Lebanon Lantern and reach almost 700 addresses within the community for the four publications, the annual charge will remain the same in 2012:**

\$ 50 business card size

\$ 75 quarter page

\$150 half page

\$300 full page

Please contact the municipal office at 236-2425.

**The Borough of Lebanon Governing Body**

Mayor Michael F. Reino

mreino@lebanonboro.com

Council President Richard Burton

rburton@lebanonboro.com

Councilman President Sam Berger

sberger@lebanonboro.com

Councilman Robert Junge

rjunge@lebanonboro.com

Councilman John Knoble

jknable@lebanonboro.com

Councilman James Pittinger

jpittinger@lebanonboro.com

Councilwoman Bonnie Schmidt

bschmidt@lebanonboro.com

**Municipal Contacts**

Karen Romano, Municipal Clerk

clerk@lebanonboro.com

Lisa Saharic, Deputy Clerk

deputy@lebanonboro.com

Kay Winzenried, Tax Collector

tax@lebanonboro.com

Curtis Schick, Tax Assessor

assessor@lebanonboro.com



**GETTING MARRIED**

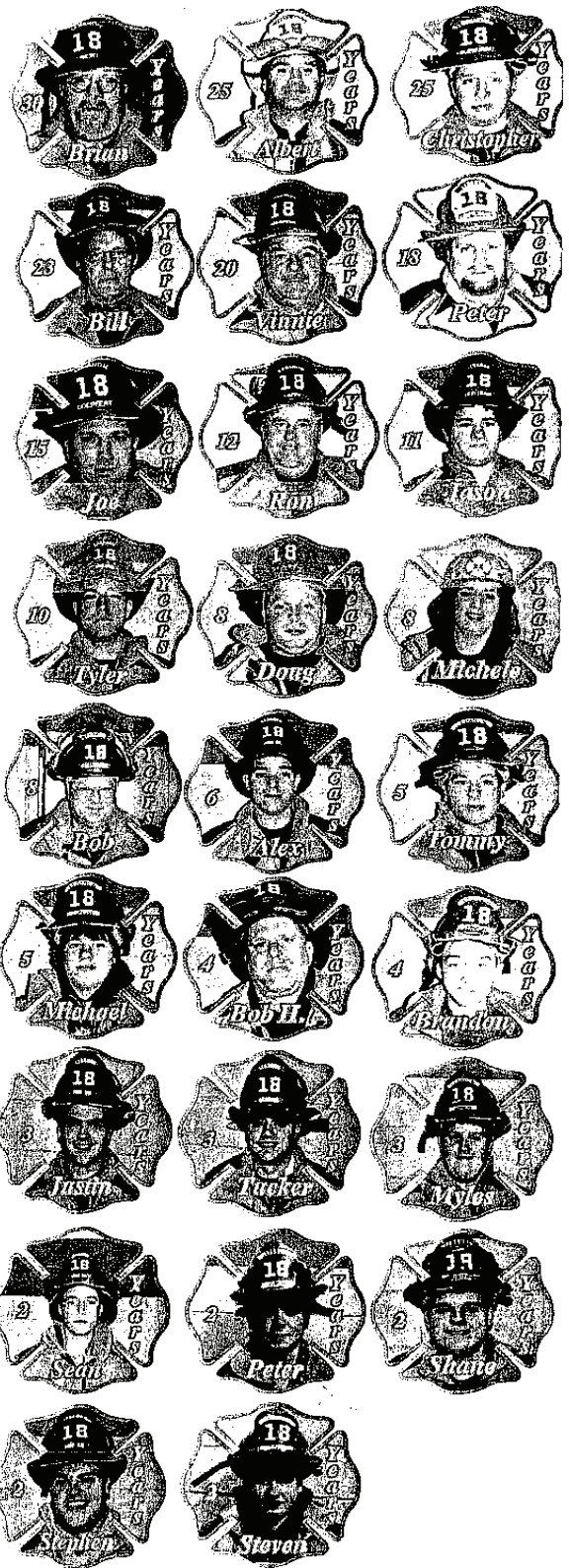
**Download your Marriage Application at [www.lebanonboro.com](http://www.lebanonboro.com)  
Present the completed application 30 days before your event at  
the Borough Hall with your partner and witness.**

**THE COMMUNICATIONS COMMITTEE ENCOURAGES COMMENTS AND  
ARTICLES.**

**Submission deadline for the Summer Edition is Friday, June 7, 2013.**

**You can email your submission to: [bschmidt@lebanonboro.com](mailto:bschmidt@lebanonboro.com)**

**Please check the tab titled Announcements on our website <http://lebanonboro.com>  
for any updates or changes.**



## A Message from your neighborhood firefighters:

Hopefully you recognize the faces of your neighbors shown on this page.

These neighbors are the volunteers who make up the Lebanon Volunteer Fire Company and who responded to 387 emergency calls in 2012. The calls included a coordinated response from the Clinton Rescue Squad housed at our firehouse in the Borough of Lebanon for a faster emergency service for all the residents we serve.

What we offer you is a combined **481** years of dedicated service, extensive training, and a will to come to your aid in a time of emergency. We willingly offer our time to train, and satisfy all governmental edicts, in order to provide you with fast and comprehensive emergency service.

Not only do we respond to all emergencies in the area we cover; which includes the recent storms, but also we coordinate and participate in the following: public events, deliver Santa Claus for the annual Christmas Parade, The Halloween Parade and the Fourth of July Parade. We control the Burning of the Greens, and host the annual Hose Down as a community service.

We are the ones who open the roads of fallen trees, chip brush and debris along with pumping cellars to service our neighbors and community whatever the need. We spend thousands of hours training on a regular basis to keep you and your families safe. **All without pay and taking time away from our families.**

In the interest of maintaining our professionalism through training, the maintenance of the required equipment and vehicles we use, coupled with the upkeep of the firehouse, it is necessary each year to request donations. We depend upon not only municipal and corporate funds, but also your help in supplementing our annual budget.

We are a proud group of men and women, who enjoy helping out the community. We chose to raise our families here, and we thank you for your past support. We now ask for your continued support.

Each year, your neighbors, rely on you so you can rely on us. Thank you for your donation.

# Healthy Balance

The Small Store... That's Big On Your Health.



**Gluten Free  
Products**

**Herbs  
Vitamins**

Friendly, Knowledgeable  
Customer Service for over 17 years

Mon. - Fri. 9-6 Sat. 9-5 Sunday Closed

The Annex at Lebanon Plaza • 1265 Route 22 East  
Lebanon, NJ 08833 • 908-236-0440



## ALLSEASON'S

Flowers, Gifts & Greenhouses

908-236-6324

908-236-7300

62 Brunswick Ave. • Lebanon Borough  
New Jersey 08833

We Send Flowers Worldwide

### *Center for Natural Health and Rehabilitation*

#### **Dr. Jody L. Serra**

*Chiropractic Physician*

**Family Wellness Care**

*1386 Route 22 West*

**Sports Injuries**

*Lebanon NJ 08833*

**lesspainbetterhealth.com**

*908-236-6353*

**Hours By Appointment**

Hours: 8:30 am - 3:30 pm  
Monday - Saturday

Joseph Lotito  
CEO - President

## Lebanon Cheese Company, Inc.

Serving the Finest Ricotta Since 1929

Manufacturers & Distributors of Italian Cheeses

Ricotta - Mozzarella - Pizza Cheese - Romano - Provolone

Wholesale & Retail

We also carry a full line of Gourmet Ravioli and Sauces.

**Please check us out on [www.facebook.com/LebanonCheese](http://www.facebook.com/LebanonCheese)  
for a full list of products and prices.**

**10% discount with The Lantern for borough residents!**

Phone: (908)236-2611

Fax: (908)236-6870

PO Box 63  
Lebanon, NJ 08833

# Serving all levels of government in New Jersey with Engineering and Construction Services for Over 25 Years

Transportation Design & Planning  
Civil & Structural Engineering  
Construction Management & Inspection  
Traffic Analysis & Engineering  
Dam Analysis & Rehabilitation  
Asset Management / GIS

**GPI** Greenman-Pedersen, Inc.  
Engineering and Construction Services

Lebanon, NJ 908.236.9001 [gpinet.com](http://gpinet.com)



Rainbow Dike and Dam



NJ Turnpike East Viaduct



Habitat for Humanity

Town and Country Office Solutions LLC  
*Productive Environments*

**Alice Roth Fox**  
*Bookkeeping, Personal Assistant, Organizing*  
*Hourly - Small Business - Residential*

12 Amy Court  
Lebanon, New Jersey  
08833  
908-236-0660  
[alice.fox@earthlink.net](mailto:alice.fox@earthlink.net)

**Gristmill Emporium**

148 Main Street, Lebanon, NJ  
(located in the Oasis Commons Mall)

Summer hours 10:00am - 5:00pm  
Wed. - thru Sat.

Phone: 908-236-6411

\*consignment by appointment

WHERE IT'S ALL ABOUT YOU

*Lace and Beads*

BRIDAL COUTURE AND MORE  
BRIDAL PLUS SIZES  
WEDDING GOWNS, BRIDESMAIDS  
MOTHER OF THE OCCASION  
FORMAL EVENING & PROM  
INVITATIONS & JEWELRY

WWW.LACEANDBEADSBRIDAL.COM  
(908) 840-4470

*Adristy*  
S.A.L.O.N

MASSAGE & MEDITATION  
ORGANIC PRODUCTS  
FULL SERVICE SALON

WWW.ADRISTYSALON.COM  
(908) 236-7878

ADRISTY SALON

**30%  
OFF**

**ONE SERVICE\***  
\*NEW CUSTOMERS ONLY

148 MAIN STREET AT THE OASIS COMMONS • ROUTE 22 • LEBANON, NEW JERSEY 08833

# STEIDLE PENSION SOLUTIONS

Steidle Pension Solutions, LLC  
128 Main Street  
Lebanon, NJ 08833  
1.800.630.401K (4015)  
[www.sps401k.com](http://www.sps401k.com)

401K Design • Installation • Administration • Service

# SMILE!

## KROWICKI ORTHODONTICS

**Dr. Charles M. Krowicki**

Diplomate, American Board of Orthodontics  
63 Main Street, P.O. Box 545 • Lebanon, NJ 08833

*Creating Beautiful Smiles For  
Over 20 Years*

**Complimentary  
Initial Exam**

This appointment will allow us to examine your bite, the alignment of your teeth, the growth of your jaws, facial appearance and your overall oral health.

For Your Convenience  
We Offer Morning Hours  
Starting at 7am on Thursday  
And Evening Hours to 6pm on  
Monday, Tuesday & Wednesday

Ask Dr. Krowicki About  
**The Damon System Modern Teeth Straightening**  
*Quick & Comfortable With Extraordinary Results!*  
*Less Time Than Traditional Braces. Get The Smile You And Your  
Family Have Always Wanted, Usually Without Extractions Or Headgear.*

**908.236.2802 • [www.krowickiorthodontics.com](http://www.krowickiorthodontics.com)**



**Dentistry For The Whole Family**

Sallyanne Bonner, D.M.D., M.A.G.D.  
Vincent J. Schaible, D.M.D.  
Erin O'Grodnick, D.M.D.

126 Main Street  
Lebanon, NJ 08833  
(908)236-9650

[WWW.bonnerandschaible@comcast.net](mailto:WWW.bonnerandschaible@comcast.net)

# L & T IMPORT & EXPORT CORP

## Your One-Stop for Industrial Construction Materials

Bridge legs • Scaffolding  
Debris netting • Boots • Rain Suits  
Gloves • Safety Rope

**Call (908) 236-8806  
to place your order today!**

*See our complete list of products at  
[www.LTimportexport.com](http://www.LTimportexport.com)*



### LEBANON DOOR COMPANY

119 Main Street, Lebanon, NJ 08833  
(908) 236-2620

Glenn Coats, Proprietor  
Established 1957

Fax 908-236-2946  
Home 908-730-6536

Certified by the Supreme Court  
of New Jersey as a  
Matrimonial Law Attorney



**MARY ANN BAUER**  
A PROFESSIONAL CORPORATION  
ATTORNEY AT LAW

27 Main Street  
Lebanon, New Jersey 08833  
(908) 236-8204  
Fax (908) 236-8205

E-Mail: [maryann.bauerlaw@earthlink.net](mailto:maryann.bauerlaw@earthlink.net)

### HUNTERDON FURNITURE RESTORATION AND UPHOLSTERY

LEBANON ANTIQUES

**Bob Kuna**  
1211 Route 22  
Lebanon, NJ 08833  
908 / 236-2851

[www.hunterdonfurniture.com](http://www.hunterdonfurniture.com)



**Claire & Edward J. Turkiewicz, Jr.**  
Sales Representatives

Office: 908.735.8140  
Fax: 908.735.8372  
Claire's Cell: 908.310.7496  
Ed's Cell: 908.310.6639  
Email: [turkiewicz@earthlink.net](mailto:turkiewicz@earthlink.net)  
Web: [www.Turkiewicz.Biz](http://www.Turkiewicz.Biz)

9 W. Main Street  
Clinton, NJ 08809





# Lebanon Borough Park School

Sponsored by the Lebanon Borough Recreation Commission

**When: June 24<sup>th</sup> - August 2<sup>nd</sup>**  
**Closed Thursday July 4<sup>th</sup>**

**Times: Monday - Friday**  
9 a.m. - 12 p.m.

**Where: Lebanon Borough Hall**  
6 High Street

**Eligibility:** The Lebanon Borough Park School is open to all children who are 3.5 years old by June 24<sup>th</sup>, 2013 to children who will finish 6<sup>th</sup> grade by June 2013. 3.5 year olds must be completely potty trained.

**Registration:** Please complete the following registration form and return it to:

Lebanon Borough School 6 Maple Street Lebanon NJ 08833  
or  
Lebanon Borough Hall 6 High Street Lebanon, NJ 08833

**Fees:**

**In Town Residents: \$150.00**

**In Town Family Fee: \$150.00 (1<sup>st</sup> Child) Any additional children \$125.00 per child**

**In town Resident Early Bird Registration: \$125.00 (1<sup>st</sup> child only)**

**Out of Town Residents \$200.00 (No discounts apply)**

**EARLY BIRD REGISTRATION AVAILABLE FOR IN TOWN RESIDENTS ONLY**  
**NO ADDITIONAL SIBLING DISCOUNT**

Early Bird Registration Deadline: April 30, 2013  
Registration Deadline: June 4, 2013

Please make all checks payable to "**Lebanon Borough Recreation Commission**"

