

2020 STORMWATER INSPECTION MAP

LEBANON BOROUGH
HUNTERDON COUNTY
NEW JERSEY



Legend

INLET CONDITION

- ★ GOOD
- BAD DEBRIS
- POOR STRUCTURE
- ▲ POOR BOTH

OUTFALL CONDITION

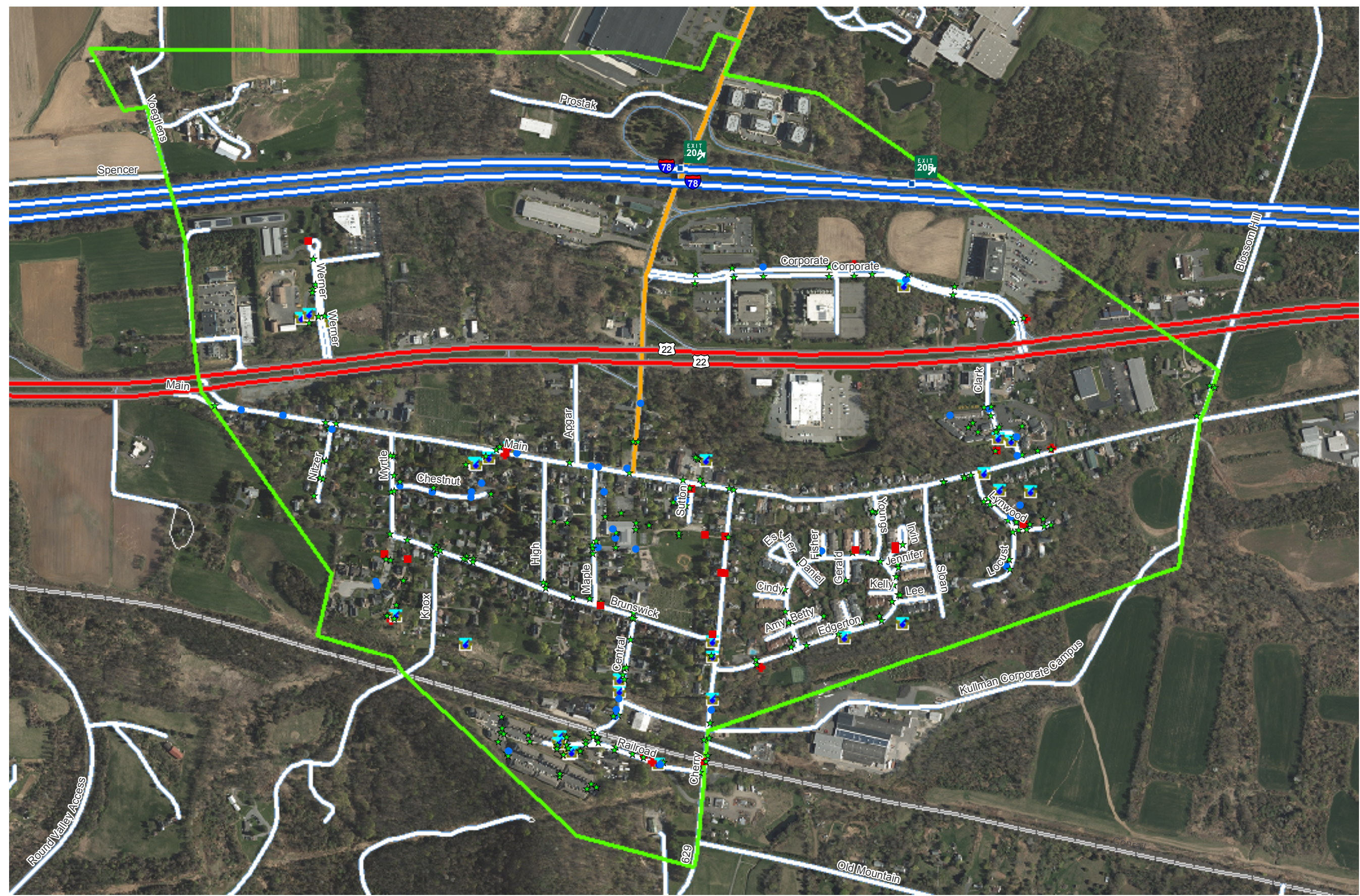
- ▬ GOOD
- ⊕ POOR

ROADS

- ▬ Primary Limited Access or Interstate
- ▬ Primary US and State Highways
- ▬ Secondary State and County Highway
- ▬ Freeway ramp
- ▬ Local or Rural Road
- ▬ Pedestrian way
- ▬ Railroads (20k to 0)

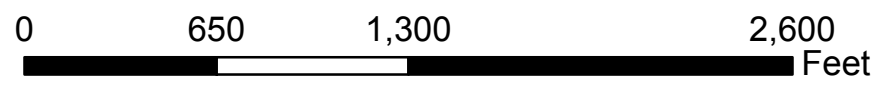
BOUNDARIES

- ▭ Lebanon Borough



Coordinate System: NAD 1983 CORS96 StatePlane New Jersey FIPS 2900 Ft US
 Projection: Transverse Mercator
 Datum: NAD 1983 CORS96
 Units: Foot US
 Date: June 2020

1 inch = 650 feet



Prepared By:
STORMWATER
 COMPLIANCE SOLUTIONS, LLC