

The background features a complex network of thin, light gray lines connecting various sized gray circular nodes. The nodes are scattered across the frame, with some appearing in clusters and others in isolation. The overall aesthetic is clean and technical, suggesting a focus on infrastructure or data networks.

# Infrastructure Committee

---



# Agenda

---

## Updates

- ✓ Streets and Roads
- ✓ Technology
- ✓ Utilities
- ✓ Building and Grounds

# Streets and Roads

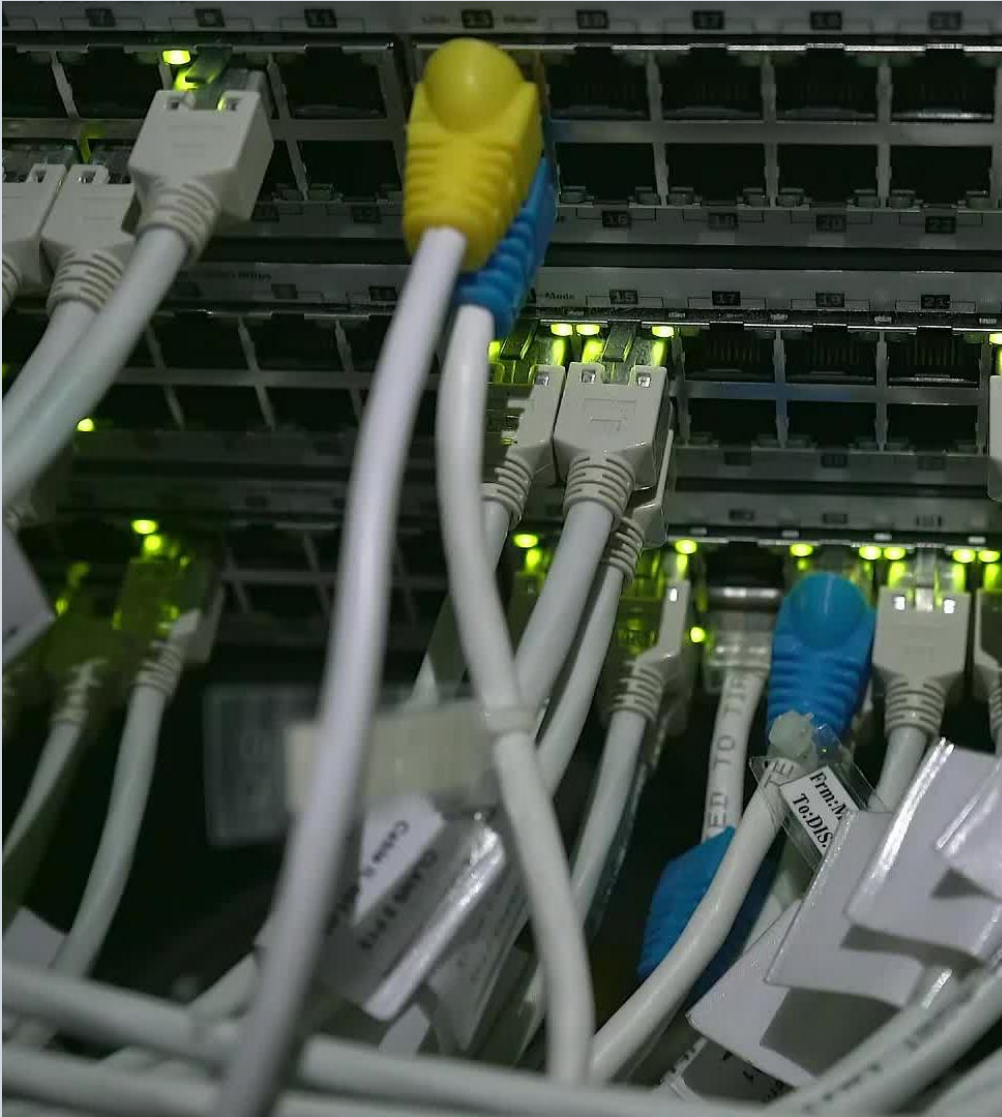
---



Engineer works with Administrator and committee to recommend projects which can take the form or repairs which may come out of the budget or potentially capital. Examples of non-capital projects could be pothole repair or other repair-oriented items such as parking lot sealcoating or repairing inlets, or jetvac of inlets.

**2024 Young Road and Upper Myrtle**

**These Projects were completed in MARCH 2025**



# Technology Upgrades

---

## In process

- ✓ Maglocks – investigating
- ✓ Camera Deployments for 6 High - **Planning**
  - ✓ Locations identified – Scheduling wiring
  - ✓ Will be completed in a phased approach – key door locations first

# Buildings and Grounds - Park

---

## Objectives:

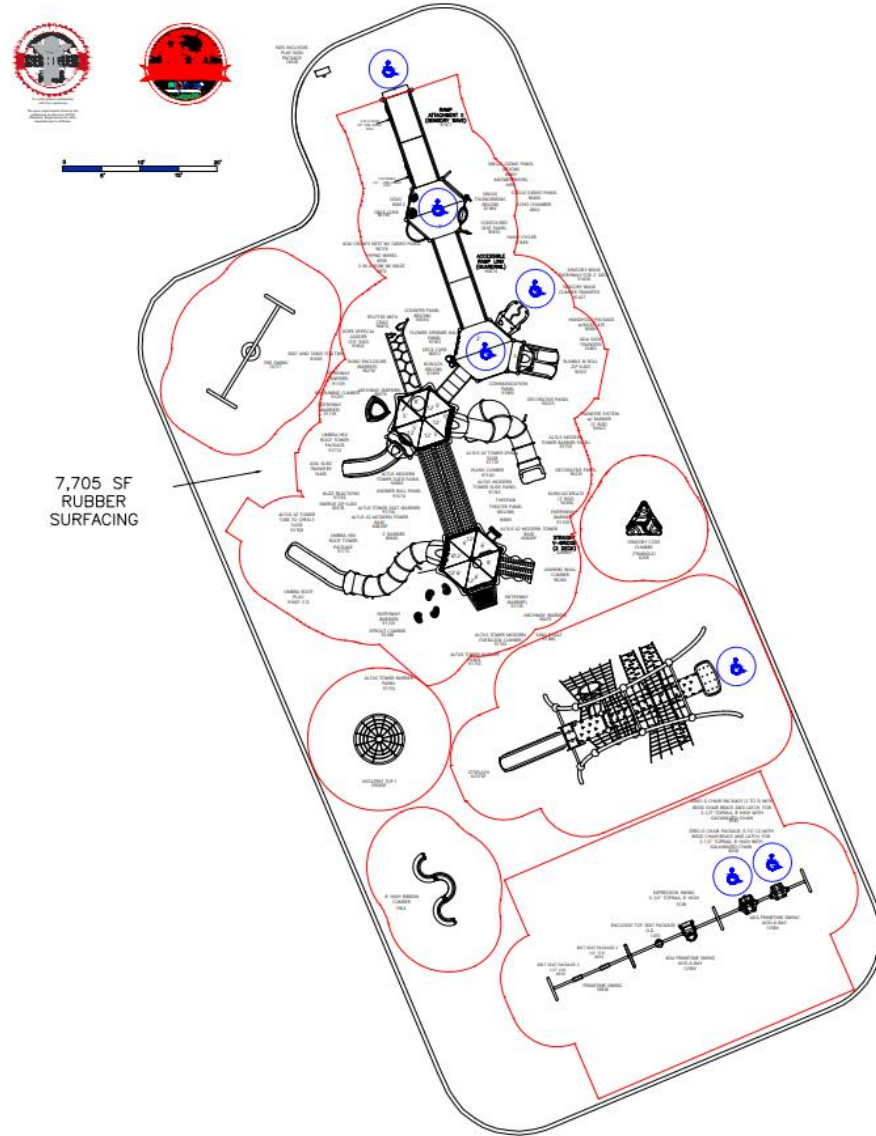
- ✓ New Inclusive Playground
- ✓ Inclusive Entry to Playground, Pavillion, etc
- ✓ Connect Cherry Street sidewalk through park to school parking lot and from church.
- ✓ Perimeter walkway around Park
- ✓ Pole Barn with Pavilion (with utilities) (Inclusive)
- ✓ Cameras and Wi-Fi availability in Park
- ✓ Researching Grant Opportunities for Charging Station and Solar
- ✓ Pave Driveway between Main St, Sutton Place and School Driveway,
- ✓ Significant Additional Parking
- ✓ Drainage Improvements



# Park Documents

## Park Rendering

# LEBANON INCLUSIVE PLAYGROUND LEBANON, NJ



# Playground



Rubber Recycle  
1985 Rutgers University Boulevard  
Lakewood, NJ 08701  
p: 888.436.6846  
f: 732.370.4247

03/17/2025  
Quote #  
117188-02-01

## NJ Lebanon Borough Inclusive Playground - Surfacing

Lebanon Borough  
Attn: Karen Romano  
6 High Street  
Lebanon, NJ 08833  
United States  
Phone: 19082362425  
clerk@lebanonboro.com

Ship to Zip 08833

Quantity	Part #	Description	Unit Price	Amount
1	PSRB14	RR - Supply & Install 7,705 SF of Rubberbond Elevate Blend- Color Selection: _____	\$155,641.00	\$155,641.00
			<b>Sub Total</b>	\$155,641.00
			<b>Discount</b>	(\$9,246.00)
			<b>Total</b>	\$146,395.00

### Comments

NJ State Contract #16-FLEET-00131

Shipping to Lebanon, NJ.

Sales tax is not included.

RS/ja

# Surfaces



MRC  
 PO Box 106  
 Spring Lake, NJ 07762  
 Ph: 732-458-1111  
 Email: MRC@GAMETIME.COM  
 Web: www.mrcrec.com

03/17/2025  
 Quote #  
 117188-01-02

## NJ Lebanon Borough Inclusive Playground

Lebanon Borough  
 Attn: Karen Romano  
 6 High Street  
 Lebanon, NJ 08833  
 United States  
 Phone: 19082362425  
 clerk@lebanonboro.com

Ship to Zip 08833

Quantity	Part #	Description	Unit Price	Amount
1	6258	GameTime - Sensory Cove Climber - Triangle	\$3,472.00	\$3,472.00
1	7054	GameTime - 8Hi Ribbon Wall	\$13,887.00	\$13,887.00
1	10777	GameTime - Tire Swing F/S, 5" Od	\$3,792.00	\$3,792.00
1	14928	GameTime - NDS Inclusive Play Sign Package		
1	5958SP	GameTime - VistaTree Top 1	\$13,757.00	\$13,757.00
1	6257SP	GameTime - GT Splash	\$64,683.00	\$64,683.00
1	RDU	GameTime - 3-Bay PrimeTime Swings with (1) Expression Swing, (1) Tot Seat, (1) 5-12 Zero-G, (1) 2-5 Zero-G, and (2) Belt Seats	\$9,247.00	\$9,247.00
1	RDU	GameTime - Custom PowerScape 5-12 Unit	\$273,696.44	\$273,696.44
1	INSTALL	GameTime - Installation by a Certified GameTime Installer- Includes: accepting delivery of equipment & disposal of packing materials; minor grading (spoils to remain on site); concrete curbing; 2" stone base for rubber surfacing prep; install of new playground equipment	\$100,000.00	\$100,000.00
Contract: ESC New Jersey			<b>Sub Total</b>	\$482,534.44
			<b>Discount</b>	(\$149,534.43)
			<b>Freight</b>	\$20,125.82
			<b>Total</b>	\$353,125.83

### Comments

ESCNJ Contract #ESCNJ 24/25-01

Shipping to Lebanon, NJ.

No safety surfacing is included.

Sales tax is not included. Please supply a copy of your tax exempt certificate when placing your order.

RS/ja

**CHOOSE YOUR COLOR SCHEME:** IT IS VERY IMPORTANT THAT YOU CHOOSE A COLOR SCHEME FOR YOUR MODULAR PLAYGROUND UNIT AT TIME OF ORDER. PLEASE SELECT FROM ONE OF THE MANY "PLAY PALETTES" LISTED IN THE BACK OF THE GAMETIME CATALOG OR ON OUR WEBSITE: [www.gametime.com](http://www.gametime.com). INDICATE YOUR SELECTION BELOW. **GAMETIME PLAY PALETTE:**

**NOTE: COLOR SELECTION FOR ALL OTHER EQUIPMENT SHOULD BE ENTERED IN THE SPACE PROVIDED UNDER THAT SPECIFIC ITEM.**

# Playground Equipment



# Playground Rendering

## Lebanon Borough Playground Project

Projected Cost	
Park Equipment	\$ 353,126.00
Equipment Base	\$ 146,395.00
Pavilion	\$ 18,700.00
Garage Improvments	\$ 53,300.00
Sutton Place	\$ 80,000.00
Parking Lot, Utilities	\$ 548,479.00
<b>TOTAL</b>	<b>\$ 1,200,000.00</b>

Projected Revenues		
2023 State Grant	\$ 100,000.00	
2024 State Grant	\$ 77,000.00	
Hunterdon County Grant	\$ 75,000.00	Received
Hunterdon County Grant	\$ 45,000.00	Received
Hunter County Open Space	\$ 86,685.00	
DOT Sutton Place	\$ 80,000.00	
Ordinance # 2019-05 Balance available as of 4/16/25 \$1,195,451.40	\$ 736,315.00	
<b>TOTAL</b>	<b>\$ 1,200,000.00</b>	

Projected Cost

Revenues and  
Sources of  
Project Funding

---

## 2025 Holjes Sheppard Memorial Park Renovation

### Draft Schedule

Date	Project	Status
4/21/2025	Soil Testing	HC Soil Conservation
6/19/2024	SiteWork Award	To Be Awarded
7/5/2025	Park Demo	Fire Dept
7/21/2025	Site Work	To Start
8/25/2025	Playground install	To Start
8/25/2025	Barn	To Start
8/24/2025	Pavillon	To Start
9/19/2025	Paving Sutton and Parking Lot Lot	To Start
10/1/2025	Seeding	To Start
10/10/2015	Completion	

# Timeline

---